

Anti-PP2A alpha/beta Antibody (R2A75)

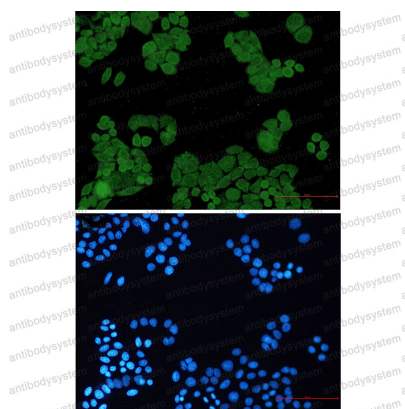
Summary

Catalog No.	RHF61202
Clone ID	R2A75
Host species	Rabbit
Tested applications	IF: 1:50-1:200, IHC: 1:50-1:100, IP: 1:20, WB: 1:500-1:1000
Species reactivity	Human, Mouse, Rat, Hamster
Form	Liquid
Storage buffer	0.01M PBS, pH 7.4, 0.05% BSA, 50% Glycerol, 0.05% Sodium azide.
Concentration	1 mg/ml
Purity	>95% by SDS-PAGE.
Clonality	Monoclonal
Isotype	IgG
Applications	IF, IHC, IP, WB
Target	Replication protein C, Serine/threonine-protein phosphatase 2A catalytic subunit alpha isoform, RP-C, PP2A-alpha, PPP2CA
Purification	Protein A/G purified from cell culture supernatant.
Endotoxin level	Please contact with the lab for this information.
Accession	P67775
Stability and Storage	Use a manual defrost freezer and avoid repeated freeze thaw cycles. Store at 4 °C for frequent use. Store at -20 °C for twelve months from the date of receipt.

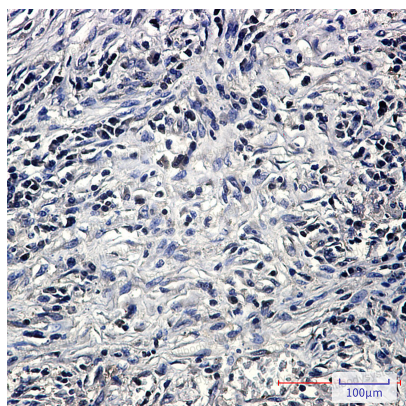
Note

For research use only.

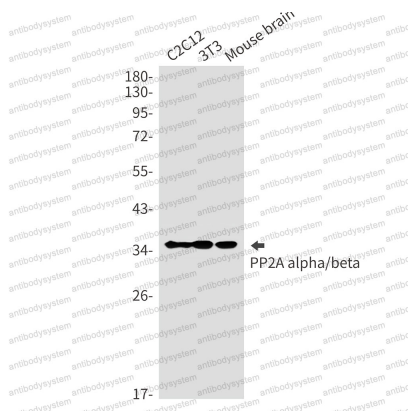
Data Image

**Immunofluorescence**

Immunocytochemistry analysis of PP2A alpha/beta (green) in hela using PP2A alpha/beta antibody, and DAPI(blue).

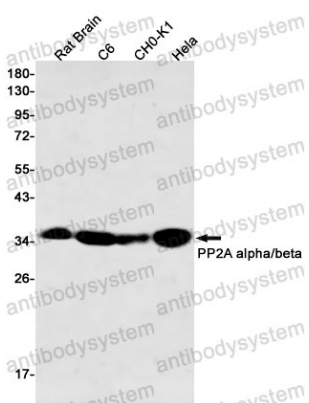
**Immunohistochemical**

Immunohistochemistry analysis of paraffin-embedded Human lung cancer using PP2A alpha/beta antibody. High-pressure and temperature Sodium Citrate pH 6.0 was used for antigen retrieval.



Western blot

Western blot analysis of PP2A alpha/beta in C2C12, 3T3, mouse brain lysates using PP2A alpha/beta antibody.



Western blot

Western blot analysis of PP2A alpha/beta in rat Brain, C6, CHO-K1, Hela lysates using PP2A alpha/beta antibody.