

Anti-UBE2I/UBC9 Antibody (R2A73)

Summary

Catalog No.	RHF60801
Clone ID	R2A73
Host species	Rabbit
Tested applications	IF: 1:50-1:200, IHC: 1:50-1:100, IP: 1:20, WB: 1:500-1:1000
Species reactivity	Human, Mouse, Rat
Form	Liquid
Storage buffer	0.01M PBS, pH 7.4, 0.05% BSA, 50% Glycerol, 0.05% Sodium azide.
Concentration	1 mg/ml
Purity	>95% by SDS-PAGE.
Clonality	Monoclonal
Isotype	IgG
Applications	IF, IHC, IP, WB
Target	UBE2I, UBC9, p18, UBCE9, Ubiquitin carrier protein 9, RING-type E3 SUMO transferase UBC9, SUMO-conjugating enzyme UBC9, Ubiquitin carrier protein I, Ubiquitin-protein ligase I, Ubiquitin-conjugating enzyme E2 I, SUMO-protein ligase
Purification	Protein A/G purified from cell culture supernatant.
Endotoxin level	Please contact with the lab for this information.
Accession	P63279

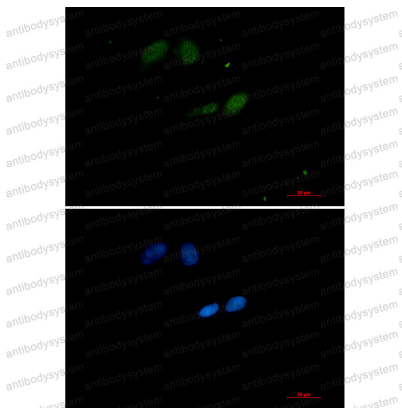
Stability and Storage

Use a manual defrost freezer and avoid repeated freeze thaw cycles. Store at 4 °C for frequent use. Store at -20 °C for twelve months from the date of receipt.

Note

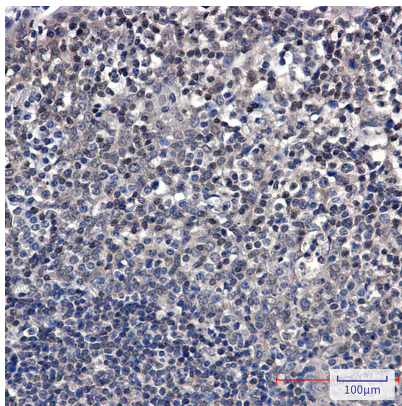
For research use only.

Data Image



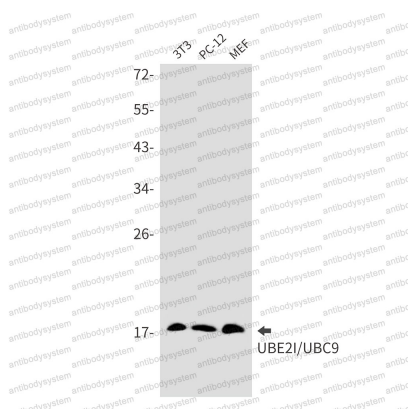
Immunofluorescence

Immunocytochemistry analysis of SUMO Conjugating Enzyme UBC9 (green) in HeLa using SUMO Conjugating Enzyme UBC9 antibody, and DAPI (blue).



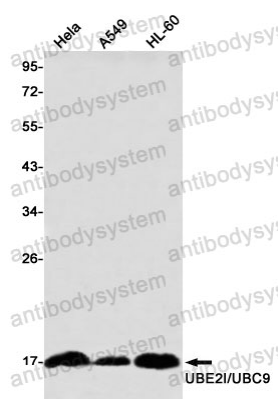
Immunohistochemical

Immunohistochemistry analysis of paraffin-embedded Human tonsil using UBE2I/UBC9 antibody. High-pressure and temperature Sodium Citrate pH 6.0 was used for antigen retrieval.



Western blot

Western blot analysis of UBE2I/UBC9 in 3T3, PC-12, MEF lysates using UBE2I/UBC9 antibody.



Western blot

Western blot analysis of UBE2I/UBC9 in HeLa, A549, HL-60 lysates using UBE2I/UBC9 antibody