

# Anti-RACK1 Antibody (R2A71)

## Summary

---

<b>Catalog No.</b>	RHF60301
<b>Clone ID</b>	R2A71
<b>Host species</b>	Rabbit
<b>Tested applications</b>	IHC: 1:50-1:100, WB: 1:500-1:1000
<b>Species reactivity</b>	Human, Mouse, Rat
<b>Form</b>	Liquid
<b>Storage buffer</b>	0.01M PBS, pH 7.4, 0.05% BSA, 50% Glycerol, 0.05% Sodium azide.
<b>Concentration</b>	1 mg/ml
<b>Purity</b>	>95% by SDS-PAGE.
<b>Clonality</b>	Monoclonal
<b>Isotype</b>	IgG
<b>Applications</b>	IHC, WB
<b>Target</b>	RACK1, Human lung cancer oncogene 7 protein, Guanine nucleotide-binding protein subunit beta-like protein 12.3, GNB2L1, Cell proliferation-inducing gene 21 protein, Guanine nucleotide-binding protein subunit beta-2-like 1, Receptor of activated protein C kinase 1, Guanine nucleotide-binding protein subunit beta-2-like 1, N-terminally processed, Receptor for activated C kinase, Small ribosomal subunit protein RACK1, HLC-7
<b>Purification</b>	Protein A/G purified from cell culture supernatant.
<b>Endotoxin level</b>	Please contact with the lab for this information.

## Recombinant Proteins &amp; Antibodies

**Accession** P63244**Stability and Storage**

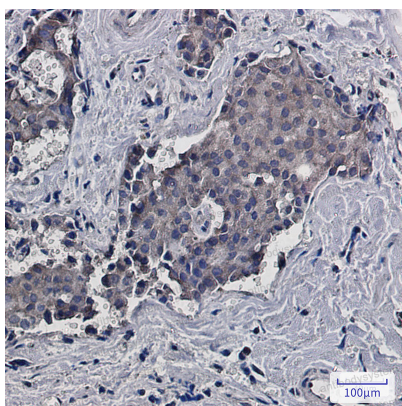
Use a manual defrost freezer and avoid repeated freeze thaw cycles. Store at 4 °C for frequent use. Store at -20 °C for twelve months from the date of receipt.

**Note**

For research use only.

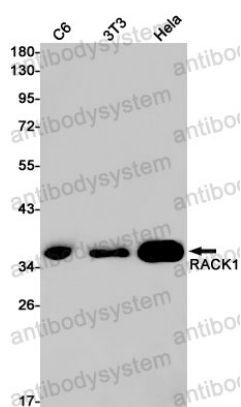
## Data Image

---



Immunohistochemical

Immunohistochemistry analysis of paraffin-embedded Human breast cancer using RACK1 antibody. High-pressure and temperature Sodium Citrate pH 6.0 was used for antigen retrieval.



Western blot

Western blot analysis of RACK1 in C6, 3T3, HeLa lysates using RACK1 antibody.