

Recombinant Human MAPT/Tau/PHF-tau Protein, C-His

Summary

Catalog No.	YHC82401
Alternative Names	MAPTL, Paired helical filament-tau, MTBT1, Microtubule-associated protein tau, TAU, Neurofibrillary tangle protein, MAPT, PHF-tau
Form	Lyophilized
Storage buffer	Lyophilized from a solution in PBS pH 7.4, 0.02% NLS, 1mM EDTA, 4% Trehalose, 1% Mannitol.
Purity	>90% as determined by SDS-PAGE.
Applications	ELISA, Immunogen, SDS-PAGE, WB, Bioactivity testing in progress
Endotoxin level	Please contact with the lab for this information.
Expression system	E. coli
Accession	P10636
Protein length	Met1-Leu758
Nature	Recombinant
Predicted molecular weight	81.24 kDa
Stability and Storage	Use a manual defrost freezer and avoid repeated freeze thaw cycles. Store at 2 to 8°C for frequent use. Store at -20 to -80°C for twelve months from the date of receipt.
Reconstitution	Reconstitute in sterile water for a stock solution. A copy of datasheet will be provided with the products, please refer to it for details.

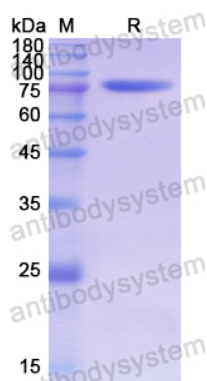
Recombinant Proteins & Antibodies

Species Homo sapiens (Human)

Shipping In general, proteins are provided as lyophilized powder/frozen liquid. They are shipped out with dry ice/blue ice unless customers require otherwise.

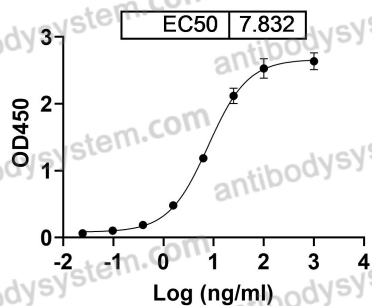
Note For research use only.

Data Image



SDS-PAGE

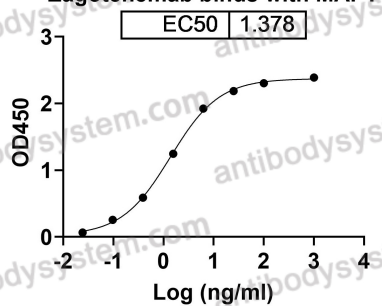
SDS PAGE for recombinant Human MAPT/Tau/PHF-tau protein



Bioactivity

Detects Gosuranemab in indirect ELISAs.

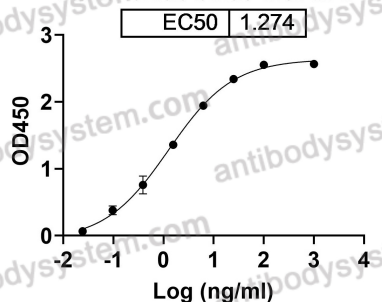
Zagotenemab binds with MAPT



Detects Zagotenemab in indirect ELISAs.

Bioactivity

Tilavonemab binds with MAPT



Detects Tilavonemab in indirect ELISAs.

Bioactivity