

Anti-SKP1 Antibody (R2A68)

Summary

Catalog No.	RHF59701
Clone ID	R2A68
Host species	Rabbit
Tested applications	IF: 1:50-1:200, WB: 1:500-1:1000
Species reactivity	Human, Mouse, Rat
Form	Liquid
Storage buffer	0.01M PBS, pH 7.4, 0.05% BSA, 50% Glycerol, 0.05% Sodium azide.
Concentration	1 mg/ml
Purity	>95% by SDS-PAGE.
Clonality	Monoclonal
Isotype	IgG
Applications	IF, WB
Target	p19A, Organ of Corti protein 2, EMC19, SKP1, Organ of Corti protein II, OCP2, OCP-2, RNA polymerase II elongation factor-like protein, Cyclin-A/CDK2-associated protein p19, OCP-II, p19skp1, TCEB1L, S-phase kinase-associated protein 1, SIII, Transcription elongation factor B polypeptide 1-like, SKP1A
Purification	Protein A/G purified from cell culture supernatant.
Endotoxin level	Please contact with the lab for this information.
Accession	P63208

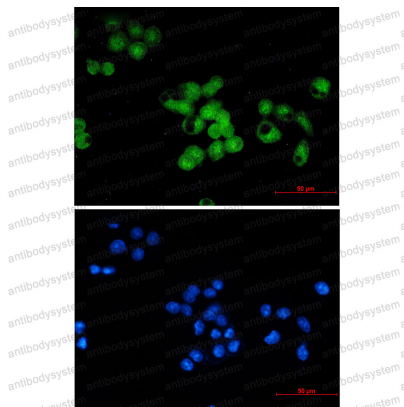
Recombinant Proteins & Antibodies

Stability and Storage

Use a manual defrost freezer and avoid repeated freeze thaw cycles. Store at 4 °C for frequent use. Store at -20 °C for twelve months from the date of receipt.

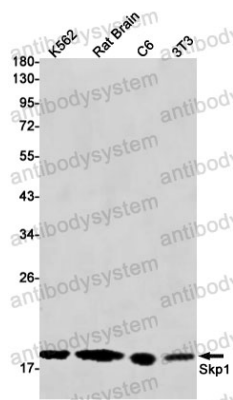
Note

For research use only.

Data Image

Immunofluorescence

Immunocytochemistry analysis of Skp1 (green) in MCF-7 using Skp1 antibody, and DAPI (blue)



Western blot

Western blot analysis of Skp1 in K562, rat Brain, C6, 3T3 lysates using SKP1 antibody.