

Anti-SUMO1 Antibody (R2A64)

Summary

Catalog No.	RHF59302
Clone ID	R2A64
Host species	Rabbit
Tested applications	IHC: 1:50-1:100, WB: 1:500-1:1000
Species reactivity	Human, Mouse, Rat
Form	Liquid
Storage buffer	0.01M PBS, pH 7.4, 0.05% BSA, 50% Glycerol, 0.05% Sodium azide.
Concentration	1 mg/ml
Purity	>95% by SDS-PAGE.
Clonality	Monoclonal
Isotype	IgG
Applications	IHC, WB
Target	SUMO-1, SMT3C, SMT3H3, Sentrin, GMP1, Ubiquitin-like protein UBL1, UBL1, Small ubiquitin-related modifier 1, Ubiquitin-homology domain protein PIC1, SUMO1, Ubiquitin-like protein SMT3C, SMT3 homolog 3, Smt3C, GAP-modifying protein 1
Purification	Protein A/G purified from cell culture supernatant.
Endotoxin level	Please contact with the lab for this information.
Accession	P63165

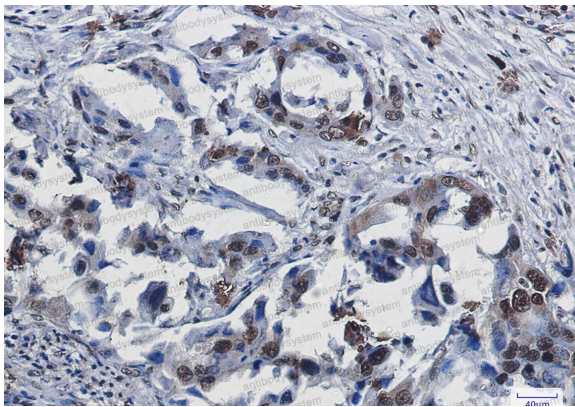
Recombinant Proteins & Antibodies

Stability and Storage

Use a manual defrost freezer and avoid repeated freeze thaw cycles. Store at 4 °C for frequent use. Store at -20 °C for twelve months from the date of receipt.

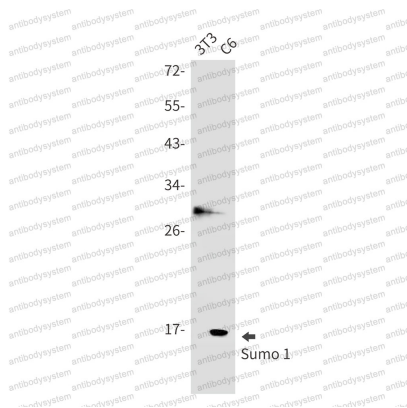
Note

For research use only.

Data Image

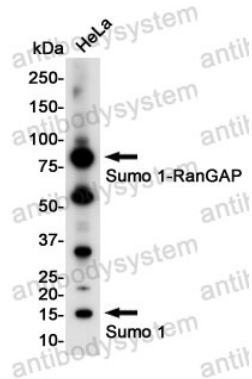
Immunohistochemical

Immunohistochemistry analysis of paraffin-embedded Human lung cancer using Sumo 1 antibody. High-pressure and temperature Sodium Citrate pH 6.0 was used for antigen retrieval.



Western blot

Western blot analysis of Sumo 1 in 3T3, C6 lysates using SUMO1 antibody.



Western blot

Western blot analysis of Sumo 1 in HeLa lysates using Sumo 1 antibody.