

# Anti-UBA52 Antibody (R2A57)

## Summary

---

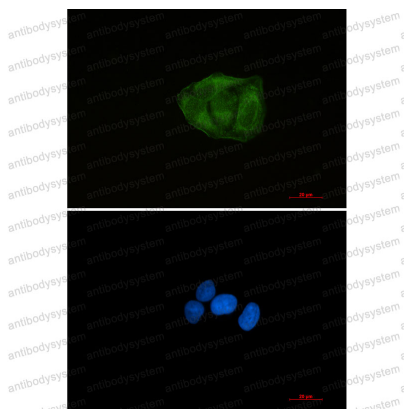
<b>Catalog No.</b>	RHF56201
<b>Clone ID</b>	R2A57
<b>Host species</b>	Rabbit
<b>Tested applications</b>	IF: 1:50-1:200, IP: 1:20, WB: 1:500-1:1000
<b>Species reactivity</b>	Human
<b>Form</b>	Liquid
<b>Storage buffer</b>	0.01M PBS, pH 7.4, 0.05% BSA, 50% Glycerol, 0.05% Sodium azide.
<b>Concentration</b>	1 mg/ml
<b>Purity</b>	>95% by SDS-PAGE.
<b>Clonality</b>	Monoclonal
<b>Isotype</b>	IgG
<b>Applications</b>	IF, IP, WB
<b>Target</b>	UBA52, Ubiquitin-60S ribosomal protein L40, Large ribosomal subunit protein eL40, Ubiquitin A-52 residue ribosomal protein fusion product 1, CEP52, UBCEP2
<b>Purification</b>	Protein A/G purified from cell culture supernatant.
<b>Endotoxin level</b>	Please contact with the lab for this information.
<b>Accession</b>	P62987

**Stability and Storage**

Use a manual defrost freezer and avoid repeated freeze thaw cycles. Store at 4 °C for frequent use. Store at -20 °C for twelve months from the date of receipt.

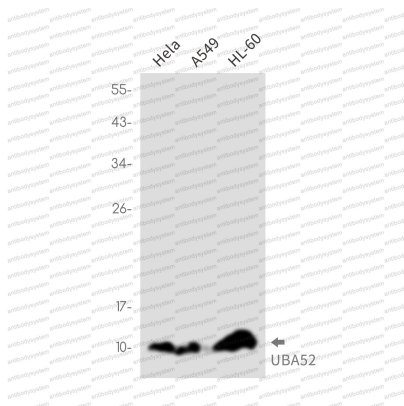
**Note**

For research use only.

**Data Image**

Immunofluorescence

Immunocytochemistry analysis of Ubiquitin 60S Ribosomal Protein L40 (green) in HeLa using Ubiquitin 60S Ribosomal Protein L40 antibody, and DAPI (blue).



Western blot

Western blot analysis of UBA52 in HeLa, A549, HL-60 lysates using UBA52 antibody.