

Anti-FKBP1A Antibody (R2A55)

Summary

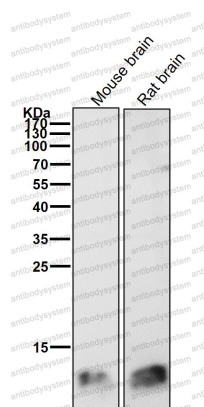
Catalog No.	RHF55701
Clone ID	R2A55
Host species	Rabbit
Tested applications	IF: 1:50-1:200, WB: 1:1000-1:2000
Species reactivity	Human, Mouse, Rat
Form	Liquid
Storage buffer	0.01M PBS, pH 7.4, 0.05% BSA, 50% Glycerol, 0.05% Sodium azide.
Concentration	1 mg/ml
Purity	>95% by SDS-PAGE.
Clonality	Monoclonal
Isotype	IgG
Applications	IF, WB
Target	PPIase FKBP1A, Peptidyl-prolyl cis-trans isomerase FKBP1A, Calstabin-1, FKBP-1A, FKBP1, FKBP-12, Rotamase, FK506-binding protein 1A, Immunophilin FKBP12, FKBP12, FKBP1A, 12 kDa FKBP, 12 kDa FK506-binding protein
Purification	Protein A/G purified from cell culture supernatant.
Endotoxin level	Please contact with the lab for this information.
Accession	P62942

Stability and Storage

Use a manual defrost freezer and avoid repeated freeze thaw cycles. Store at 4 °C for frequent use. Store at -20 °C for twelve months from the date of receipt.

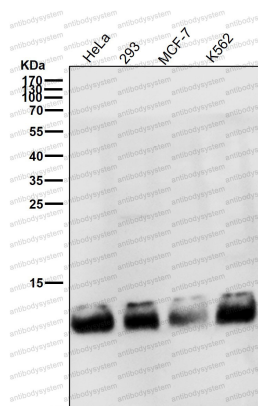
Note

For research use only.

Data Image

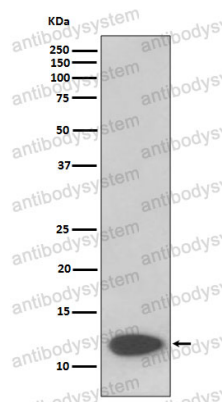
Western blot

All lanes use the Antibody at 1:2K dilution for 1 hour at room temperature.



Western blot

All lanes use the Antibody at 1:2K dilution for 1 hour at room temperature.



Western blot

Western blot analysis of FKBP12 expression in SH-SY5Y cell lysate.