

Anti-RBX1 Antibody (R2A49)

Summary

Catalog No.	RHF54701
Clone ID	R2A49
Host species	Rabbit
Tested applications	IF: 1:50-1:200, IHC: 1:50-1:100, IP: 1:20, WB: 1:500-1:1000
Species reactivity	Human, Mouse, Rat
Form	Liquid
Storage buffer	0.01M PBS, pH 7.4, 0.05% BSA, 50% Glycerol, 0.05% Sodium azide.
Concentration	1 mg/ml
Purity	>95% by SDS-PAGE.
Clonality	Monoclonal
Isotype	IgG
Applications	IF, IHC, IP, WB
Target	RING finger protein 75, RNF75, E3 ubiquitin-protein transferase RBX1, N-terminally processed, RBX1, E3 ubiquitin-protein ligase RBX1, Rbx1, ROC1, E3 ubiquitin-protein transferase RBX1, Protein ZYP, RING-box protein 1, Regulator of cullins 1
Purification	Protein A/G purified from cell culture supernatant.
Endotoxin level	Please contact with the lab for this information.
Accession	P62877

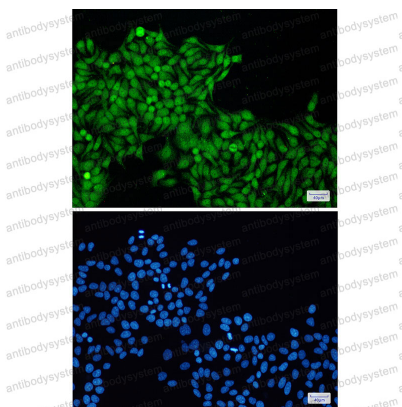
Stability and Storage

Use a manual defrost freezer and avoid repeated freeze thaw cycles. Store at 4 °C for frequent use. Store at -20 °C for twelve months from the date of receipt.

Note

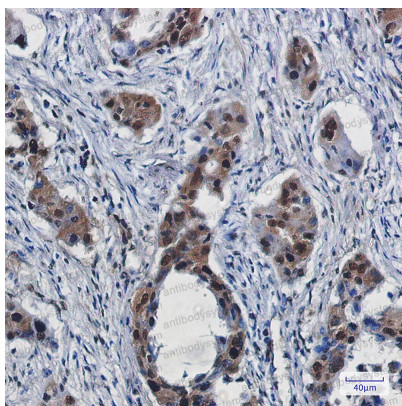
For research use only.

Data Image



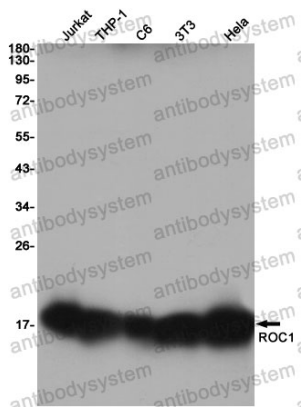
Immunofluorescence

Immunocytochemistry analysis of ROC1(green) in Hela using ROC1 antibody, and DAPI(blue)



Immunohistochemical

Immunohistochemistry analysis of paraffin-embedded Human lung cancer using ROC1 antibody. High-pressure and temperature Sodium Citrate pH 6.0 was used for antigen retrieval.



Western blot

Western blot analysis of ROC1 in Jurkat, THP-1, C6, 3T3, HeLa lysates using RBX1 antibody.