

Anti-RBX1 Antibody (R2A48)

Summary

Catalog No.	RHF54702
Clone ID	R2A48
Host species	Rabbit
Tested applications	FCM: 1:20-1:100, IF: 1:50-1:200, IHC: 1:100-1:200, IP: 1:20-1:50, WB: 1:1000-1:2000
Species reactivity	Human, Mouse, Rat
Form	Liquid
Storage buffer	0.01M PBS, pH 7.4, 0.05% BSA, 50% Glycerol, 0.05% Sodium azide.
Concentration	1 mg/ml
Purity	>95% by SDS-PAGE.
Clonality	Monoclonal
Isotype	IgG
Applications	FCM, IF, IHC, IP, WB
Target	RING finger protein 75, RNF75, E3 ubiquitin-protein transferase RBX1, N-terminally processed, RBX1, E3 ubiquitin-protein ligase RBX1, Rbx1, ROC1, E3 ubiquitin-protein transferase RBX1, Protein ZYP, RING-box protein 1, Regulator of cullins 1
Purification	Protein A/G purified from cell culture supernatant.
Endotoxin level	Please contact with the lab for this information.
Accession	P62877

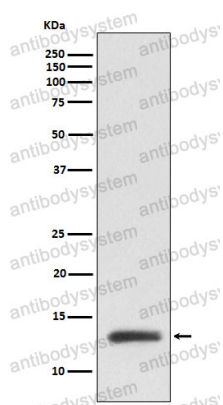
Stability and Storage

Use a manual defrost freezer and avoid repeated freeze thaw cycles. Store at 4 °C for frequent use. Store at -20 °C for twelve months from the date of receipt.

Note

For research use only.

Data Image



Western blot

Western blot analysis of ROC1 expression in MCF7 cell lysate.