

# Anti-RAN Antibody (R2A47)

## Summary

---

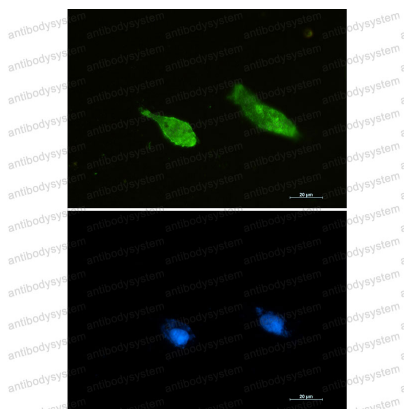
<b>Catalog No.</b>	RHF53501
<b>Clone ID</b>	R2A47
<b>Host species</b>	Rabbit
<b>Tested applications</b>	IF: 1:50-1:200, IP: 1:20, WB: 1:500-1:1000
<b>Species reactivity</b>	Human, Mouse, Monkey
<b>Form</b>	Liquid
<b>Storage buffer</b>	0.01M PBS, pH 7.4, 0.05% BSA, 50% Glycerol, 0.05% Sodium azide.
<b>Concentration</b>	1 mg/ml
<b>Purity</b>	>95% by SDS-PAGE.
<b>Clonality</b>	Monoclonal
<b>Isotype</b>	IgG
<b>Applications</b>	IF, IP, WB
<b>Target</b>	RAN, Androgen receptor-associated protein 24, GTPase Ran, Ras-related nuclear protein, ARA24, GTP-binding nuclear protein Ran, Ras-like protein TC4
<b>Purification</b>	Protein A/G purified from cell culture supernatant.
<b>Endotoxin level</b>	Please contact with the lab for this information.
<b>Accession</b>	P62826

**Stability and Storage**

Use a manual defrost freezer and avoid repeated freeze thaw cycles. Store at 4 °C for frequent use. Store at -20 °C for twelve months from the date of receipt.

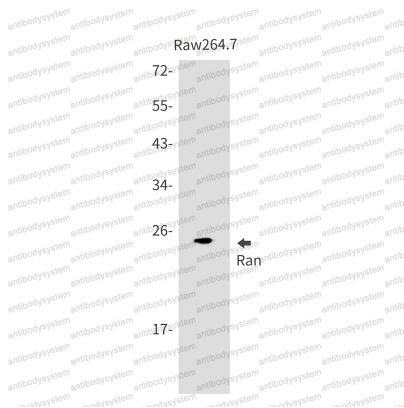
**Note**

For research use only.

**Data Image**

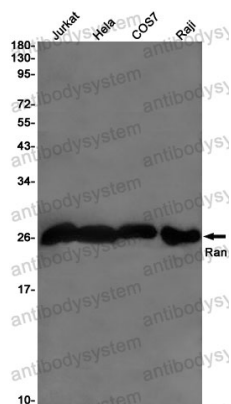
Immunofluorescence

Immunocytochemistry analysis of Ran (green) in U87-MG using Ran antibody, and DAPI(blue).



Western blot

Western blot analysis of Ran in Raw264.7 lysates using Ran antibody.



Western blot

Western blot analysis of Ran in Jurkat, Hela, COS7, Raji lysates using Ran antibody