

Anti-Histone H4 Antibody (R2A46)

Summary

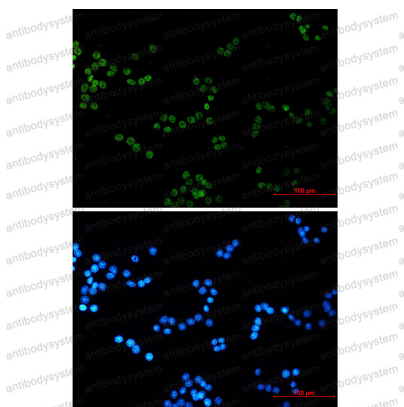
Catalog No.	RHF53204
Clone ID	R2A46
Host species	Rabbit
Tested applications	IF: 1:50-1:200, IHC: 1:50-1:100, WB: 1:500-1:1000
Species reactivity	Human
Form	Liquid
Storage buffer	0.01M PBS, pH 7.4, 0.05% BSA, 50% Glycerol, 0.05% Sodium azide.
Concentration	1 mg/ml
Purity	>95% by SDS-PAGE.
Clonality	Monoclonal
Isotype	IgG
Applications	IF, IHC, WB
Target	HIST1H4D, HIST2H4A, H4FE, H4FO, H4/D, H4/A, HIST1H4E, HIST1H4F, H4FG, HIST1H4L, H4FD, H4/H, HIST1H4B, HIST1H4I, H4FN, HIST1H4C, H4FI, H4FC, H4/C, H4/E, Histone H4, H4/G, H4/O, H4FB, H4FK, H4/M, H4/B, H4C1, HIST2H4, H4F2, HIST2H4B, HIST1H4A, HIST1H4J, H4/N, H4FH, H4/I, H4/J, H4/K, H4FJ, HIST1H4H, HIST1H4K, HIST4H4, H4FM, H4FA
Purification	Protein A/G purified from cell culture supernatant.
Endotoxin level	Please contact with the lab for this information.
Accession	P62805

Stability and Storage

Use a manual defrost freezer and avoid repeated freeze thaw cycles. Store at 4 °C for frequent use. Store at -20 °C for twelve months from the date of receipt.

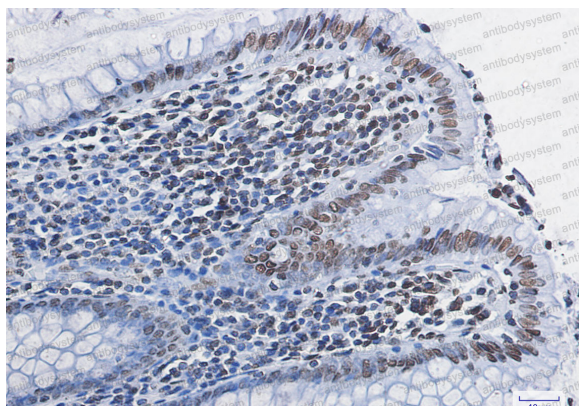
Note

For research use only.

Data Image

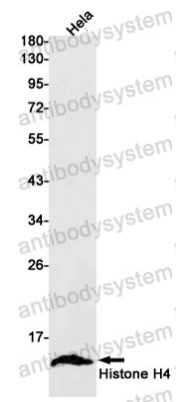
Immunofluorescence

Immunocytochemistry analysis of Histone H4 (green) in Hela using Histone H4 antibody, and DAPI(blue).



Immunohistochemical

Immunohistochemistry analysis of paraffin-embedded Human colon cancer tissue using Histone H4 antibody. High-pressure and temperature Sodium Citrate pH 6.0 was used for antigen retrieval.



Western blot

Western blot analysis of Histone H4 in HeLa lysates using Histone H4 antibody.