

# Anti-Acetyl-Histone H4 (Lys5) Antibody (R2A45)

## Summary

---

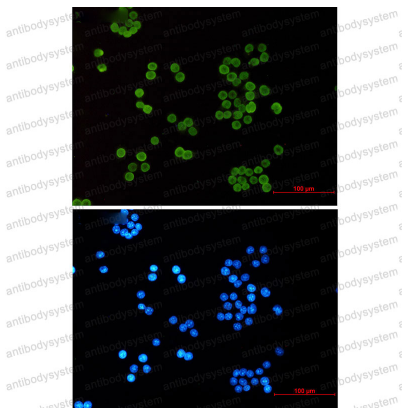
<b>Catalog No.</b>	RHF53203
<b>Clone ID</b>	R2A45
<b>Host species</b>	Rabbit
<b>Tested applications</b>	IF: 1:50-1:200, IHC: 1:50-1:100, IP: 1:20, WB: 1:500-1:1000
<b>Species reactivity</b>	Human, Mouse
<b>Form</b>	Liquid
<b>Storage buffer</b>	0.01M PBS, pH 7.4, 0.05% BSA, 50% Glycerol, 0.05% Sodium azide.
<b>Concentration</b>	1 mg/ml
<b>Purity</b>	>95% by SDS-PAGE.
<b>Clonality</b>	Monoclonal
<b>Isotype</b>	IgG
<b>Applications</b>	IF, IHC, IP, WB
<b>Target</b>	HIST1H4D, HIST2H4A, H4FE, H4FO, H4/D, H4/A, HIST1H4E, HIST1H4F, H4FG, HIST1H4L, H4FD, H4/H, HIST1H4B, HIST1H4I, H4FN, HIST1H4C, H4FI, H4FC, H4/C, H4/E, Histone H4, H4/G, H4/O, H4FB, H4FK, H4/M, H4/B, H4C1, HIST2H4, H4F2, HIST2H4B, HIST1H4A, HIST1H4J, H4/N, H4FH, H4/I, H4/J, H4/K, H4FJ, HIST1H4H, HIST1H4K, HIST4H4, H4FM, H4FA
<b>Purification</b>	Protein A/G purified from cell culture supernatant.
<b>Endotoxin level</b>	Please contact with the lab for this information.
<b>Accession</b>	P62805

**Stability and Storage**

Use a manual defrost freezer and avoid repeated freeze thaw cycles. Store at 4 °C for frequent use. Store at -20 °C for twelve months from the date of receipt.

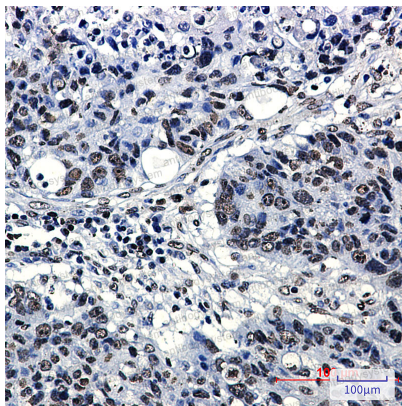
**Note**

For research use only.

**Data Image**

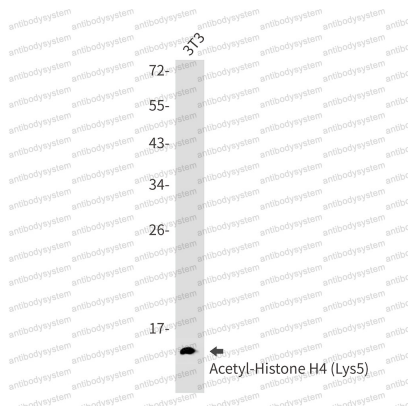
Immunofluorescence

Immunocytochemistry analysis of Acetyl-Histone H4 (Lys5) (green) in Hela using Acetyl-Histone H4 (Lys5) antibody, and DAPI (blue).

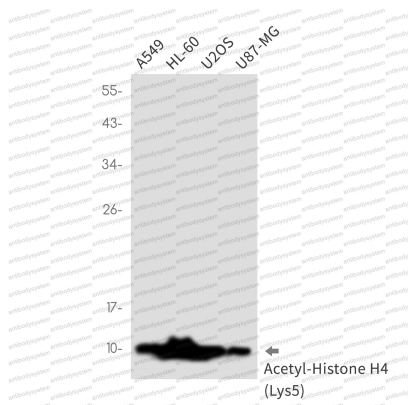


Immunohistochemical

Immunohistochemistry analysis of paraffin-embedded Human lung cancer using Acetyl-Histone H4 (Lys5) antibody. High-pressure and temperature Sodium Citrate pH 6.0 was used for antigen retrieval.



Western blot



Western blot

Western blot analysis of Acetyl-Histone H4 (Lys5) in 3T3 lysates using Acetyl-Histone H4 (Lys5) antibody. Observed band size: 11 kDa.

Western blot analysis of Acetyl-Histone H4 (Lys5) in A549, HL-60, U2OS, U87-MG lysates using Acetyl-Histone H4 (Lys5) antibody