

Anti-RPS6 Antibody (R2A44)

Summary

Catalog No.	RHF53001
Clone ID	R2A44
Host species	Rabbit
Tested applications	IF: 1:50-1:200, IHC: 1:50-1:100, IP: 1:20, WB: 1:500-1:1000
Species reactivity	Human, Mouse, Rat
Form	Liquid
Storage buffer	0.01M PBS, pH 7.4, 0.05% BSA, 50% Glycerol, 0.05% Sodium azide.
Concentration	1 mg/ml
Purity	>95% by SDS-PAGE.
Clonality	Monoclonal
Isotype	IgG
Applications	IF, IHC, IP, WB
Target	40S ribosomal protein S6, Phosphoprotein NP33, RPS6, Small ribosomal subunit protein eS6
Purification	Protein A/G purified from cell culture supernatant.
Endotoxin level	Please contact with the lab for this information.
Accession	P62753
Stability and Storage	Use a manual defrost freezer and avoid repeated freeze thaw cycles. Store at 4 °C for frequent use. Store at -20 °C for twelve months from the date of receipt.

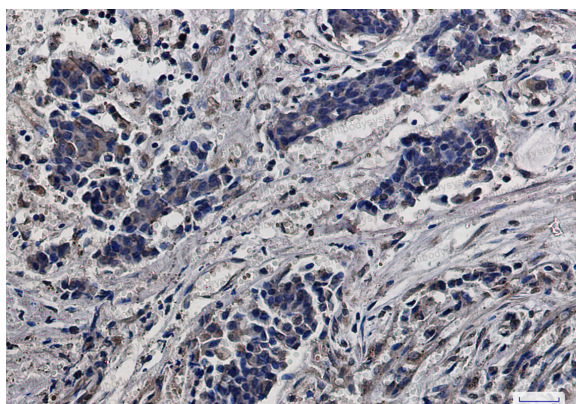
Note For research use only.

Data Image



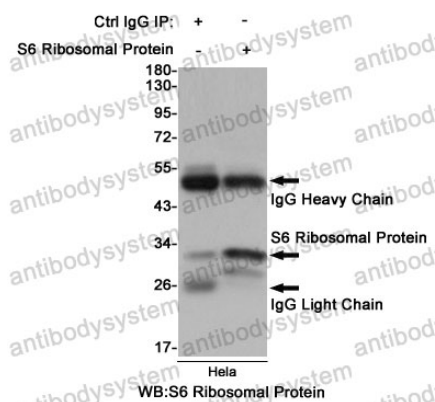
Immunocytochemistry analysis of HeLa using antiS6 Ribosomal Protein antibody.

Immunofluorescence



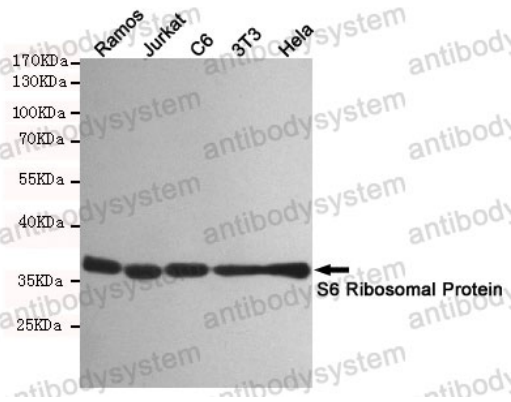
Immunohistochemistry analysis of paraffin-embedded Human breast cancer using RPS6 antibody. High-pressure and temperature Sodium Citrate pH 6.0 was used for antigen retrieval.

Immunohistochemical



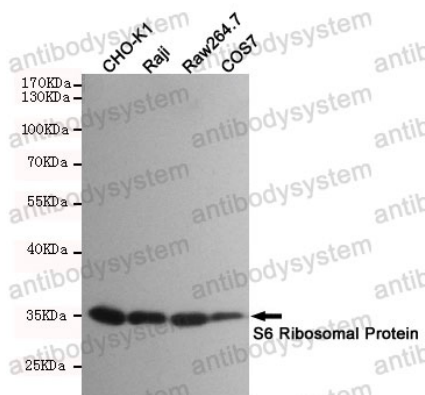
Immunoprecipitation analysis of HeLa cell lysates using S6 Ribosomal Protein antibody.

Immunoprecipitation



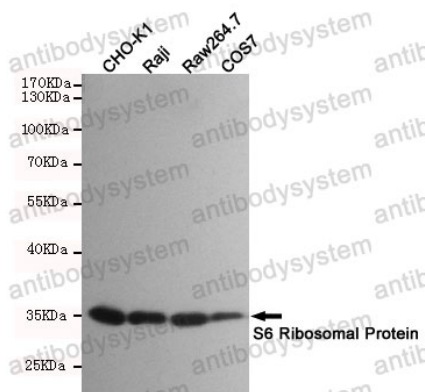
Western blot

Western blot analysis of S6 Ribosomal Protein in Ramos, Jurkat, C6, 3T3 and HeLa lysates using S6 Ribosomal Protein antibody.



Western blot

Western blot analysis of S6 Ribosomal Protein in CHO-K1, Raji, Raw264.7 and COS7 lysates using S6 Ribosomal Protein antibody.



Western blot

Western blot analysis of S6 Ribosomal Protein in CHO-K1, Raji, Raw264.7 and COS7 lysates using S6 Ribosomal Protein antibody.