

Anti-ESRRG Antibody (R2A42)

Summary

Catalog No.	RHF51901
Clone ID	R2A42
Host species	Rabbit
Tested applications	WB: 1:1000-1:2000
Species reactivity	Human, Mouse, Rat
Form	Liquid
Storage buffer	0.01M PBS, pH 7.4, 0.05% BSA, 50% Glycerol, 0.05% Sodium azide.
Concentration	1 mg/ml
Purity	>95% by SDS-PAGE.
Clonality	Monoclonal
Isotype	IgG
Applications	WB
Target	ERR3, ERR gamma-2, NR3B3, ESRRG, KIAA0832, Estrogen-related receptor gamma, Estrogen receptor-related protein 3, Nuclear receptor subfamily 3 group B member 3, ERRG2
Purification	Protein A/G purified from cell culture supernatant.
Endotoxin level	Please contact with the lab for this information.
Accession	P62508

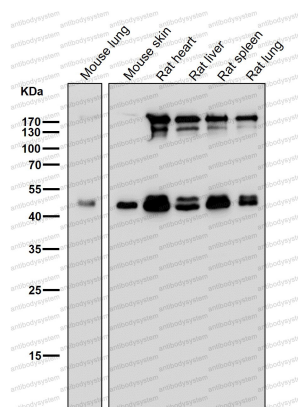
Stability and Storage

Use a manual defrost freezer and avoid repeated freeze thaw cycles. Store at 4 °C for frequent use. Store at -20 °C for twelve months from the date of receipt.

Note

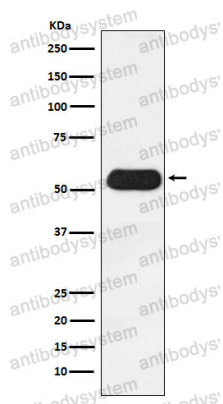
For research use only.

Data Image



Western blot

All lanes use the Antibody at 1:1K dilution for 1 hour at room temperature.



Western blot

Western blot analysis of Estrogen Related Receptor gamma expression in Human fetal heart lysate.