

Anti-RPL7A Antibody (R2A41)

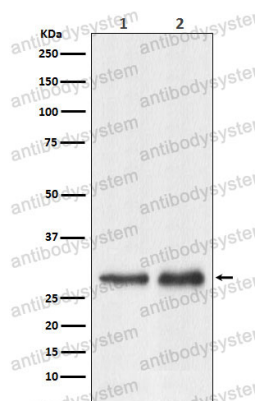
Summary

Catalog No.	RHF51401
Clone ID	R2A41
Host species	Rabbit
Tested applications	IHC: 1:100-1:200, WB: 1:1000-1:2000
Species reactivity	Human, Mouse, Rat
Form	Liquid
Storage buffer	0.01M PBS, pH 7.4, 0.05% BSA, 50% Glycerol, 0.05% Sodium azide.
Concentration	1 mg/ml
Purity	>95% by SDS-PAGE.
Clonality	Monoclonal
Isotype	IgG
Applications	IHC, WB
Target	SURF-3, Large ribosomal subunit protein eL8, SURF3, RPL7A, PLA-X polypeptide, Surfeit locus protein 3, 60S ribosomal protein L7a
Purification	Protein A/G purified from cell culture supernatant.
Endotoxin level	Please contact with the lab for this information.
Accession	P62424
Stability and Storage	Use a manual defrost freezer and avoid repeated freeze thaw cycles. Store at 4 °C for frequent use. Store at -20 °C for twelve months from the date of receipt.

Note

For research use only.

Data Image



Western blot

Western blot analysis of RPL7A expression in (1) HeLa cell lysate; (2) Raw264.7 cell lysate.