

Anti-PSMC5 Antibody (R2A34)

Summary

Catalog No.	RHF48701
Clone ID	R2A34
Host species	Rabbit
Tested applications	IF: 1:50-1:200, IP: 1:20, WB: 1:500-1:1000
Species reactivity	Human, Mouse, Rat
Form	Liquid
Storage buffer	0.01M PBS, pH 7.4, 0.05% BSA, 50% Glycerol, 0.05% Sodium azide.
Concentration	1 mg/ml
Purity	>95% by SDS-PAGE.
Clonality	Monoclonal
Isotype	IgG
Applications	IF, IP, WB
Target	Thyroid hormone receptor-interacting protein 1, TRIP1, p45/SUG, Proteasome 26S subunit ATPase 5, Proteasome subunit p45, PSMC5, 26S proteasome AAA-ATPase subunit RPT6, 26S proteasome regulatory subunit 8, SUG1
Purification	Protein A/G purified from cell culture supernatant.
Endotoxin level	Please contact with the lab for this information.
Accession	P62195

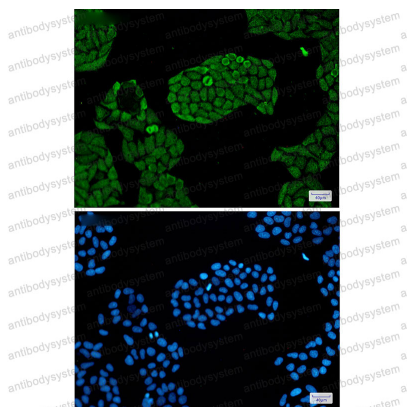
Recombinant Proteins & Antibodies

Stability and Storage

Use a manual defrost freezer and avoid repeated freeze thaw cycles. Store at 4 °C for frequent use. Store at -20 °C for twelve months from the date of receipt.

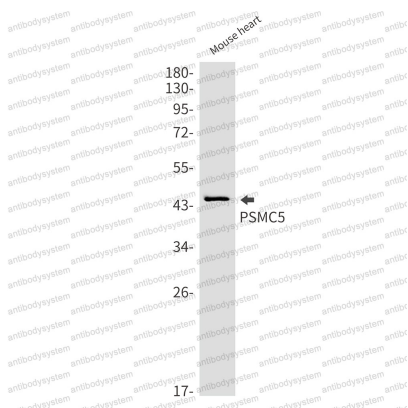
Note

For research use only.

Data Image

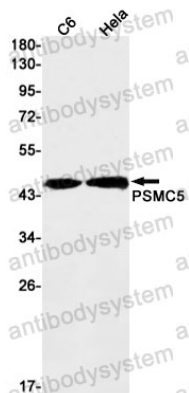
Immunofluorescence

Immunocytochemistry analysis of PSMC5(green) in Hela using PSMC5 antibody, and DAPI(blue)



Western blot

Western blot analysis of PSMC5 in mouse heart lysates using PSMC5 antibody.



Western blot

Western blot analysis of PSMC5 in C6, HeLa lysates using PSMC5 antibody.