

Anti-PPP1CB/PP1C beta Antibody (R2A31)

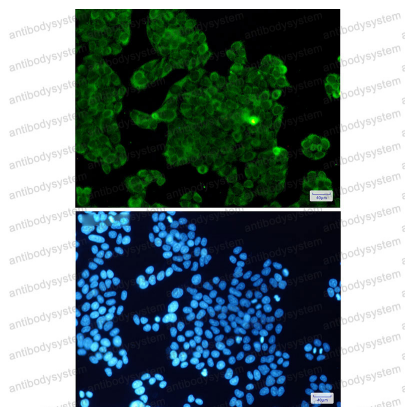
Summary

Catalog No.	RHF48401
Clone ID	R2A31
Host species	Rabbit
Tested applications	IF: 1:50-1:200, IHC: 1:50-1:100, IP: 1:20, WB: 1:500-1:1000
Species reactivity	Human, Mouse, Rat
Form	Liquid
Storage buffer	0.01M PBS, pH 7.4, 0.05% BSA, 50% Glycerol, 0.05% Sodium azide.
Concentration	1 mg/ml
Purity	>95% by SDS-PAGE.
Clonality	Monoclonal
Isotype	IgG
Applications	IF, IHC, IP, WB
Target	Serine/threonine-protein phosphatase PP1-beta catalytic subunit, PPP1CD, PP-1B, PPP1CB
Purification	Protein A/G purified from cell culture supernatant.
Endotoxin level	Please contact with the lab for this information.
Accession	P62140
Stability and Storage	Use a manual defrost freezer and avoid repeated freeze thaw cycles. Store at 4 °C for frequent use. Store at -20 °C for twelve months from the date of receipt.

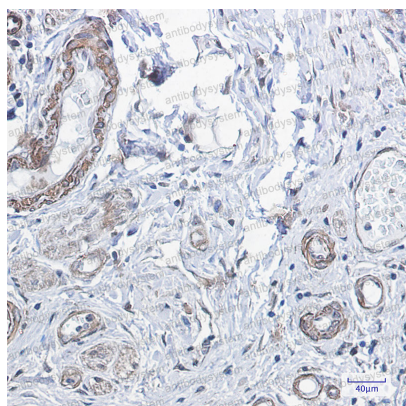
Note

For research use only.

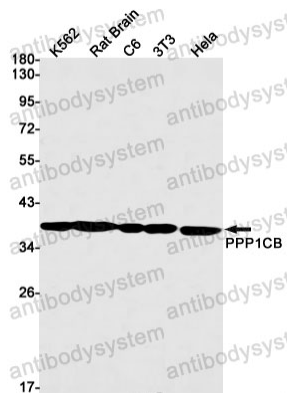
Data Image

**Immunofluorescence**

Immunocytochemistry analysis of PPP1CB(green) in Hela using PPP1CB antibody, and DAPI(blue)

**Immunohistochemical**

Immunohistochemistry analysis of paraffin-embedded Human colon cancer using PPP1CB antibody. High-pressure and temperature Sodium Citrate pH 6.0 was used for antigen retrieval.



Western blot

Western blot analysis of PPP1CB in K562, rat Brain, C6, 3T3, HeLa lysates using PP1C beta antibody.