

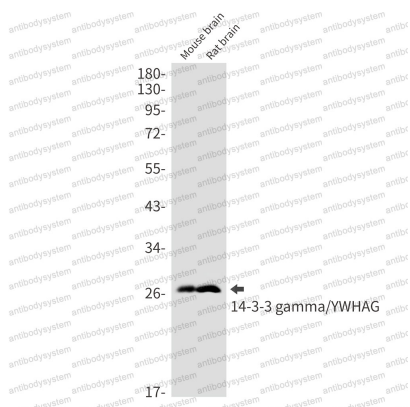
Anti-YWHAG Antibody (R2A29)

Summary

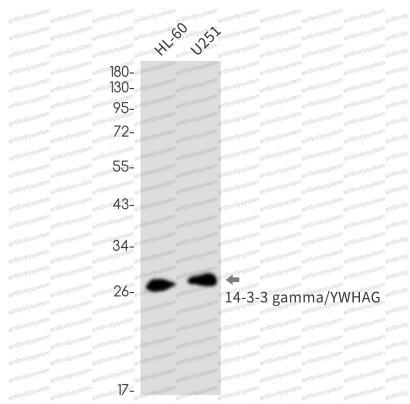
Catalog No.	RHF47701
Clone ID	R2A29
Host species	Rabbit
Tested applications	WB: 1:500-1:1000
Species reactivity	Human, Mouse, Rat
Form	Liquid
Storage buffer	0.01M PBS, pH 7.4, 0.05% BSA, 50% Glycerol, 0.05% Sodium azide.
Concentration	1 mg/ml
Purity	>95% by SDS-PAGE.
Clonality	Monoclonal
Isotype	IgG
Applications	WB
Target	Protein kinase C inhibitor protein 1, 14-3-3 protein gamma, YWHAG, KCIP-1
Purification	Protein A/G purified from cell culture supernatant.
Endotoxin level	Please contact with the lab for this information.
Accession	P61981
Stability and Storage	Use a manual defrost freezer and avoid repeated freeze thaw cycles. Store at 4 °C for frequent use. Store at -20 °C for twelve months from the date of receipt.

Note

For research use only.

Data Image**Western blot**

Western blot analysis of 14-3-3 gamma/YWHAG in mouse brain, rat brain lysates using 14-3-3 gamma antibody.

**Western blot**

Western blot analysis of 14-3-3 gamma/YWHAG in HL-60, U251 lysates using 14-3-3 gamma/YWHAG antibody.