

# Anti-Sumo2/3 Antibody (R2A20)

## Summary

---

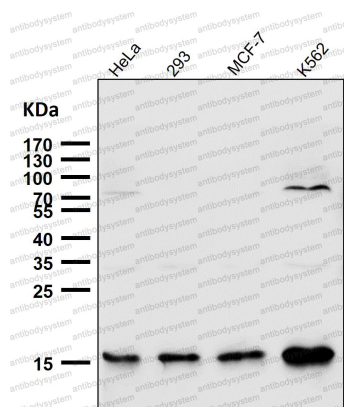
<b>Catalog No.</b>	RHF46901
<b>Clone ID</b>	R2A20
<b>Host species</b>	Rabbit
<b>Tested applications</b>	IF: 1:50-1:200, IHC: 1:100-1:200, WB: 1:1000-1:2000
<b>Species reactivity</b>	Human, Mouse, Rat
<b>Form</b>	Liquid
<b>Storage buffer</b>	0.01M PBS, pH 7.4, 0.05% BSA, 50% Glycerol, 0.05% Sodium azide.
<b>Concentration</b>	1 mg/ml
<b>Purity</b>	>95% by SDS-PAGE.
<b>Clonality</b>	Monoclonal
<b>Isotype</b>	IgG
<b>Applications</b>	IF, IHC, WB
<b>Target</b>	Ubiquitin-like protein SMT3B, SMT3B, SUMO-3, Smt3B, Sentrin-2, SMT3 homolog 2, SMT3H2, SUMO2, HSMT3, Small ubiquitin-related modifier 2, SUMO-2
<b>Purification</b>	Protein A/G purified from cell culture supernatant.
<b>Endotoxin level</b>	Please contact with the lab for this information.
<b>Accession</b>	P61956, P55854

**Stability and Storage**

Use a manual defrost freezer and avoid repeated freeze thaw cycles. Store at 4 °C for frequent use. Store at -20 °C for twelve months from the date of receipt.

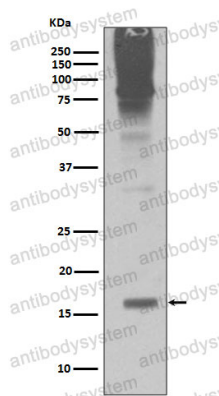
**Note**

For research use only.

**Data Image**

Western blot

All lanes use the Antibody at 1:1000 dilution for 1 hour at room temperature.



Western blot

Western blot analysis of Sumo2/3 expression in Jurkat cell lysate.