

Anti-NPC2 Antibody (R2A19)

Summary

Catalog No.	RHF46401
Clone ID	R2A19
Host species	Rabbit
Tested applications	IF: 1:50-1:200, IHC: 1:50-1:100, WB: 1:500-1:1000
Species reactivity	Human, Mouse, Rat
Form	Liquid
Storage buffer	0.01M PBS, pH 7.4, 0.05% BSA, 50% Glycerol, 0.05% Sodium azide.
Concentration	1 mg/ml
Purity	>95% by SDS-PAGE.
Clonality	Monoclonal
Isotype	IgG
Applications	IF, IHC, WB
Target	HE1, NPC intracellular cholesterol transporter 2, He1, Epididymal secretory protein E1, Human epididymis-specific protein 1, NPC2, Niemann-Pick disease type C2 protein
Purification	Protein A/G purified from cell culture supernatant.
Endotoxin level	Please contact with the lab for this information.
Accession	P61916

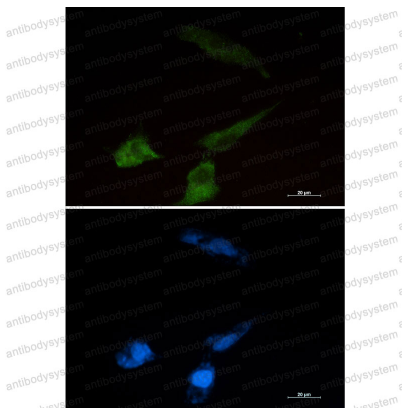
Stability and Storage

Use a manual defrost freezer and avoid repeated freeze thaw cycles. Store at 4 °C for frequent use. Store at -20 °C for twelve months from the date of receipt.

Note

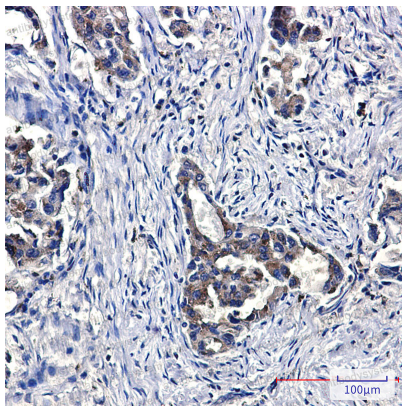
For research use only.

Data Image



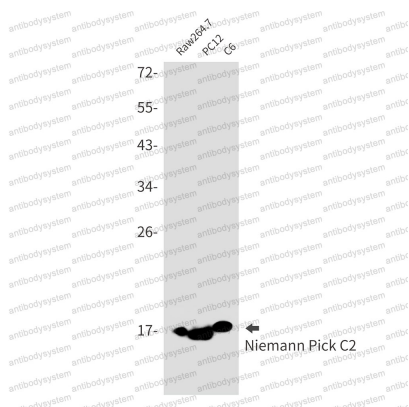
Immunofluorescence

Immunocytochemistry analysis of Niemann Pick C2 (green) in U87-MG using Niemann Pick C2 antibody, and DAPI (blue).



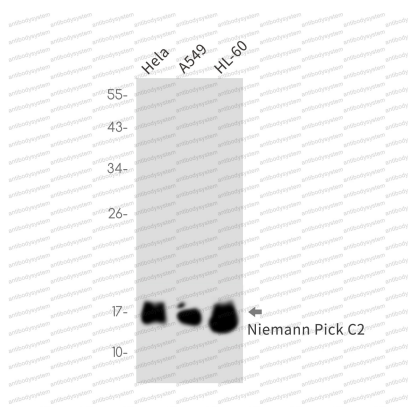
Immunohistochemical

Immunohistochemistry analysis of paraffin-embedded Human lung cancer using Niemann Pick C2 antibody. High-pressure and temperature Sodium Citrate pH 6.0 was used for antigen retrieval.



Western blot

Western blot analysis of Niemann Pick C2 in Raw264.7, PC-12, C6 lysates using Niemann Pick C2 antibody.



Western blot

Western blot analysis of Niemann Pick C2 in HeLa, A549, HL-60 lysates using Niemann Pick C2 antibody