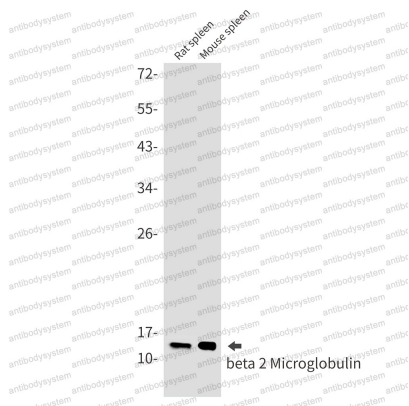


Anti-B2M/Beta-2-microglobulin Antibody (R2A16)

Summary

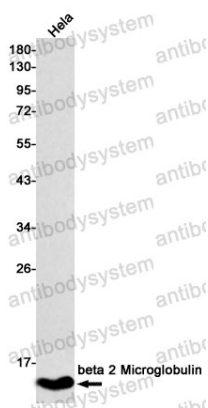
Catalog No.	RHF46104
Clone ID	R2A16
Host species	Rabbit
Tested applications	IP: 1:20, WB: 1:500-1:1000
Species reactivity	Human, Mouse, Rat
Form	Liquid
Storage buffer	0.01M PBS, pH 7.4, 0.05% BSA, 50% Glycerol, 0.05% Sodium azide.
Concentration	1 mg/ml
Purity	>95% by SDS-PAGE.
Clonality	Monoclonal
Isotype	IgG
Applications	IP, WB
Target	Beta-2-microglobulin, B2M
Purification	Protein A/G purified from cell culture supernatant.
Endotoxin level	Please contact with the lab for this information.
Accession	P61769
Stability and Storage	Use a manual defrost freezer and avoid repeated freeze thaw cycles. Store at 4 °C for frequent use. Store at -20 °C for twelve months from the date of receipt.
Note	For research use only.

Data Image



Western blot

Western blot analysis of beta 2 Microglobulin in rat spleen, mouse spleen lysates using beta 2 Microglobulin antibody.



Western blot

Western blot analysis of beta 2 Microglobulin in Hela lysates using beta 2 Microglobulin antibody.