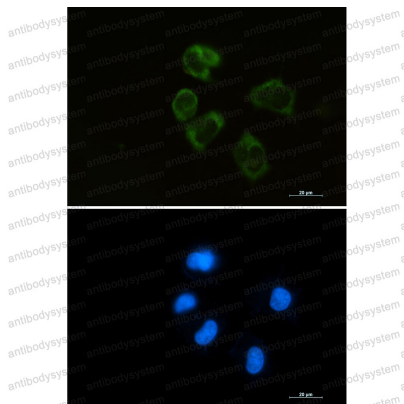


Anti-LYZ Antibody (R2A13)

Summary

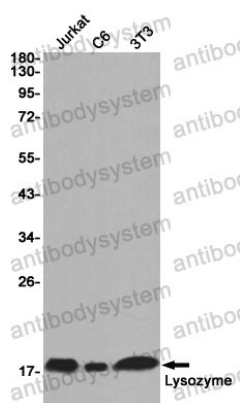
Catalog No.	RHF45705
Clone ID	R2A13
Host species	Rabbit
Tested applications	IF: 1:50-1:200, IP: 1:20, WB: 1:500-1:1000
Species reactivity	Human, Mouse, Rat
Form	Liquid
Storage buffer	0.01M PBS, pH 7.4, 0.05% BSA, 50% Glycerol, 0.05% Sodium azide.
Concentration	1 mg/ml
Purity	>95% by SDS-PAGE.
Clonality	Monoclonal
Isotype	IgG
Applications	IF, IP, WB
Target	1,4-beta-N-acetylmuramidase C, Lysozyme C, LYZ, LZM
Purification	Protein A/G purified from cell culture supernatant.
Endotoxin level	Please contact with the lab for this information.
Accession	P61626
Stability and Storage	Use a manual defrost freezer and avoid repeated freeze thaw cycles. Store at 4 °C for frequent use. Store at -20 °C for twelve months from the date of receipt.
Note	For research use only.

Data Image



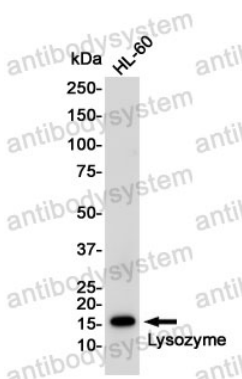
Immunofluorescence

Immunocytochemistry analysis of Lysozyme (green) in HEPG2 using Lysozyme antibody, and DAPI (blue).



Western blot

Western blot analysis of Lysozyme in Jurkat, C6, 3T3 lysates using Lysozyme antibody



Western blot

Western blot analysis of Lysozyme in HL-60 lysates using Lysozyme antibody.