

Anti-UBE2N Antibody (R1Z96)

Summary

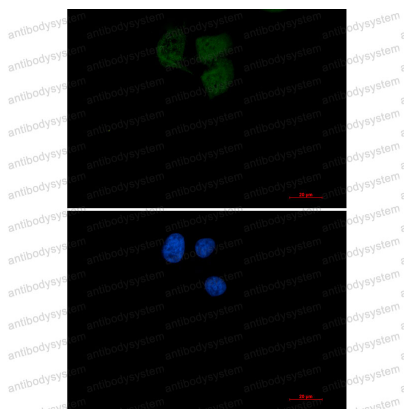
Catalog No.	RHF40301
Clone ID	R1Z96
Host species	Rabbit
Tested applications	IF: 1:50-1:200, WB: 1:500-1:1000
Species reactivity	Human, Rat
Form	Liquid
Storage buffer	0.01M PBS, pH 7.4, 0.05% BSA, 50% Glycerol, 0.05% Sodium azide.
Concentration	1 mg/ml
Purity	>95% by SDS-PAGE.
Clonality	Monoclonal
Isotype	IgG
Applications	IF, WB
Target	Ubch13, Bendless-like ubiquitin-conjugating enzyme, Ubiquitin-conjugating enzyme E2 N, Ubiquitin carrier protein N, BLU, Ubc13, E2 ubiquitin-conjugating enzyme N, Ubiquitin-protein ligase N, UBE2N
Purification	Protein A/G purified from cell culture supernatant.
Endotoxin level	Please contact with the lab for this information.
Accession	P61088

Stability and Storage

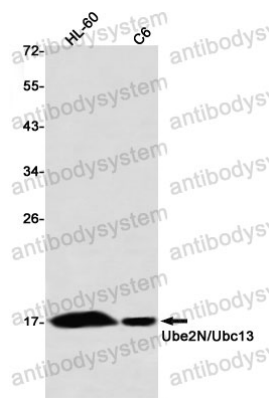
Use a manual defrost freezer and avoid repeated freeze thaw cycles. Store at 4 °C for frequent use. Store at -20 °C for twelve months from the date of receipt.

Note

For research use only.

Data Image

Immunofluorescence



Western blot

Immunocytochemistry analysis of Ubiquitin Conjugating Enzyme E2 N (green) in Hela using Ubiquitin Conjugating Enzyme E2 N antibody, and DAPI (blue).

Western blot analysis of Ube2N/Ubc13 in HL-60, C6 lysates using Ube2N/Ubc13 antibody.