

# Anti-Ube2N/Ubc13 Antibody (R1Z95)

## Summary

---

<b>Catalog No.</b>	RHF40302
<b>Clone ID</b>	R1Z95
<b>Host species</b>	Rabbit
<b>Tested applications</b>	IF: 1:50-1:200, IHC: 1:100-1:200, WB: 1:1000-1:2000
<b>Species reactivity</b>	Human, Mouse, Rat
<b>Form</b>	Liquid
<b>Storage buffer</b>	0.01M PBS, pH 7.4, 0.05% BSA, 50% Glycerol, 0.05% Sodium azide.
<b>Concentration</b>	1 mg/ml
<b>Purity</b>	>95% by SDS-PAGE.
<b>Clonality</b>	Monoclonal
<b>Isotype</b>	IgG
<b>Applications</b>	IF, IHC, WB
<b>Target</b>	UbcH13, Bendless-like ubiquitin-conjugating enzyme, Ubiquitin-conjugating enzyme E2 N, Ubiquitin carrier protein N, BLU, Ubc13, E2 ubiquitin-conjugating enzyme N, Ubiquitin-protein ligase N, UBE2N
<b>Purification</b>	Protein A/G purified from cell culture supernatant.
<b>Endotoxin level</b>	Please contact with the lab for this information.
<b>Accession</b>	P61088

**Stability and Storage**

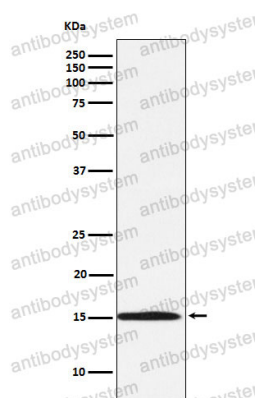
Use a manual defrost freezer and avoid repeated freeze thaw cycles. Store at 4 °C for frequent use. Store at -20 °C for twelve months from the date of receipt.

**Note**

For research use only.

**Data Image**

---



Western blot

Western blot analysis of Ube2N / Ubc13 expression in Daudi cell lysate.