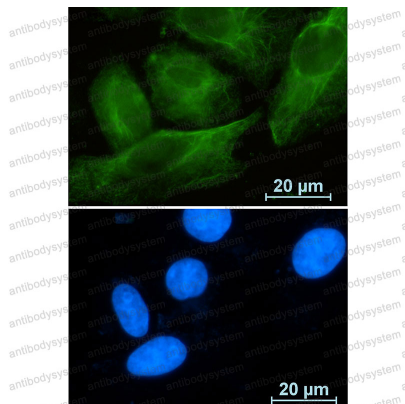


Anti-RAB10 Antibody (R1Z93)

Summary

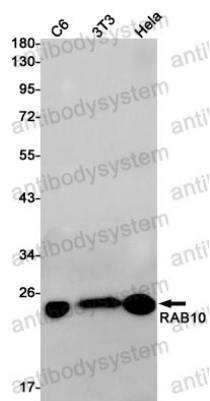
Catalog No.	RHF39802
Clone ID	R1Z93
Host species	Rabbit
Tested applications	IF: 1:50-1:200, IP: 1:20, WB: 1:500-1:1000
Species reactivity	Human, Mouse, Rat
Form	Liquid
Storage buffer	0.01M PBS, pH 7.4, 0.05% BSA, 50% Glycerol, 0.05% Sodium azide.
Concentration	1 mg/ml
Purity	>95% by SDS-PAGE.
Clonality	Monoclonal
Isotype	IgG
Applications	IF, IP, WB
Target	Ras-related protein Rab-10, RAB10
Purification	Protein A/G purified from cell culture supernatant.
Endotoxin level	Please contact with the lab for this information.
Accession	P61026
Stability and Storage	Use a manual defrost freezer and avoid repeated freeze thaw cycles. Store at 4 °C for frequent use. Store at -20 °C for twelve months from the date of receipt.
Note	For research use only.

Data Image



Immunofluorescence

Immunocytochemistry analysis of Rab10 (green) in A549 using Rab10 antibody, and DAPI (blue).



Western blot

Western blot analysis of RAB10 in C6, 3T3, HeLa lysates using RAB10 antibody.