

Anti-PSMA6 Antibody (R1Z86)

Summary

Catalog No.	RHF38501
Clone ID	R1Z86
Host species	Rabbit
Tested applications	IF: 1:50-1:200, WB: 1:500-1:1000
Species reactivity	Human, Mouse, Rat
Form	Liquid
Storage buffer	0.01M PBS, pH 7.4, 0.05% BSA, 50% Glycerol, 0.05% Sodium azide.
Concentration	1 mg/ml
Purity	>95% by SDS-PAGE.
Clonality	Monoclonal
Isotype	IgG
Applications	IF, WB
Target	Proteasome subunit alpha type-6, Multicatalytic endopeptidase complex iota chain, PROS-27, p27K, Macropain iota chain, Proteasome iota chain, 27 kDa prosomal protein, PSMA6, PROS27
Purification	Protein A/G purified from cell culture supernatant.
Endotoxin level	Please contact with the lab for this information.
Accession	P60900

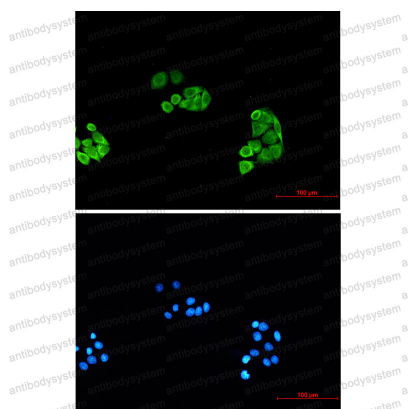
Recombinant Proteins & Antibodies

Stability and Storage

Use a manual defrost freezer and avoid repeated freeze thaw cycles. Store at 4 °C for frequent use. Store at -20 °C for twelve months from the date of receipt.

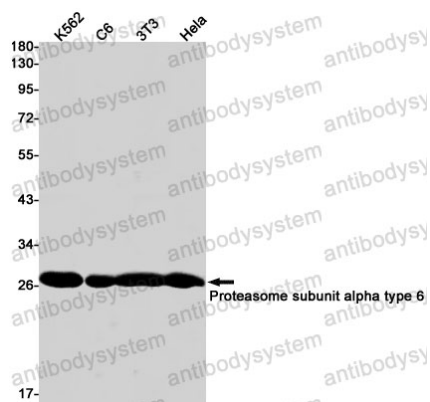
Note

For research use only.

Data Image

Immunofluorescence

Immunocytochemistry analysis of Proteasome subunit alpha type 6 (green) in HeLa using Proteasome subunit alpha type 6 antibody, and DAPI(blue)



Western blot

Western blot analysis of Proteasome subunit alpha type 6 in K562, C6, 3T3, HeLa lysates using Proteasome alpha 6 antibody.