

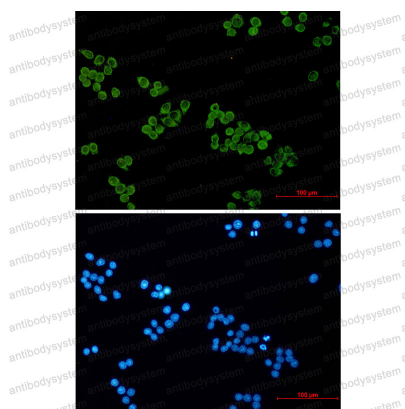
Anti-SNAP25 Antibody (R1Z85)

Summary

Catalog No.	RHF38104
Clone ID	R1Z85
Host species	Rabbit
Tested applications	IF: 1:50-1:200, IP: 1:20, WB: 1:500-1:1000
Species reactivity	Human, Mouse, Rat
Form	Liquid
Storage buffer	0.01M PBS, pH 7.4, 0.05% BSA, 50% Glycerol, 0.05% Sodium azide.
Concentration	1 mg/ml
Purity	>95% by SDS-PAGE.
Clonality	Monoclonal
Isotype	IgG
Applications	IF, IP, WB
Target	SNAP25, Super protein, SUP, Synaptosomal-associated protein 25, SNAP, SNAP-25, Synaptosomal-associated 25 kDa protein
Purification	Protein A/G purified from cell culture supernatant.
Endotoxin level	Please contact with the lab for this information.
Accession	P60880
Stability and Storage	Use a manual defrost freezer and avoid repeated freeze thaw cycles. Store at 4 °C for frequent use. Store at -20 °C for twelve months from the date of receipt.

Note

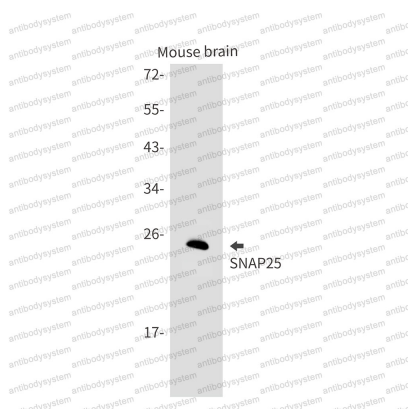
For research use only.

Data Image**Immunofluorescence**

Immunocytochemistry analysis of SNAP25 (green) in Hela using SNAP25 antibody, and DAPI (blue).

**Western blot**

Western blot analysis of SNAP25 in HL-60, C6 lysates using SNAP25 antibody



Western blot

Western blot analysis of SNAP25 in mouse brain lysates using SNAP25 antibody.