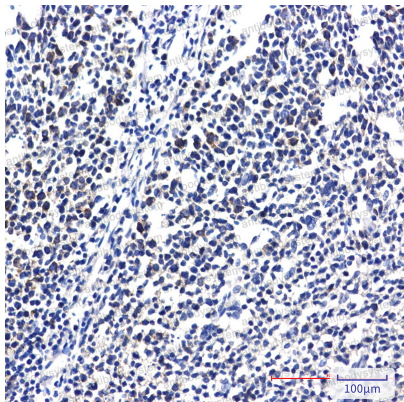


Anti-RPS20 Antibody (R1Z82)

Summary

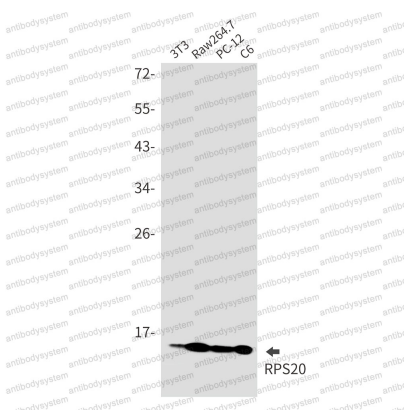
Catalog No.	RHF38001
Clone ID	R1Z82
Host species	Rabbit
Tested applications	IHC: 1:50-1:100, WB: 1:500-1:1000
Species reactivity	Human, Mouse, Rat, Hamster
Form	Liquid
Storage buffer	0.01M PBS, pH 7.4, 0.05% BSA, 50% Glycerol, 0.05% Sodium azide.
Concentration	1 mg/ml
Purity	>95% by SDS-PAGE.
Clonality	Monoclonal
Isotype	IgG
Applications	IHC, WB
Target	Small ribosomal subunit protein uS10, RPS20, 40S ribosomal protein S20
Purification	Protein A/G purified from cell culture supernatant.
Endotoxin level	Please contact with the lab for this information.
Accession	P60866
Stability and Storage	Use a manual defrost freezer and avoid repeated freeze thaw cycles. Store at 4 °C for frequent use. Store at -20 °C for twelve months from the date of receipt.
Note	For research use only.

Data Image



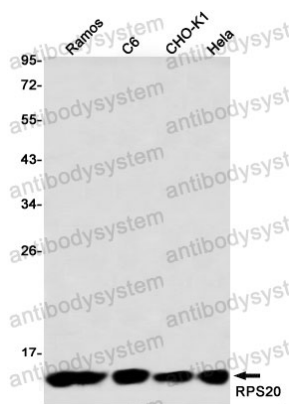
Immunohistochemical

Immunohistochemistry analysis of paraffin-embedded Human tonsil using RPS20 antibody. High-pressure and temperature Sodium Citrate pH 6.0 was used for antigen retrieval.



Western blot

Western blot analysis of RPS20 in 3T3, Raw264.7, PC-12, C6 lysates using RPS20 antibody.



Western blot

Western blot analysis of RPS20 in HeLa, CHO-K1, C6, Ramos lysates using RPS20 antibody.