

# Anti-GABARAPL2 Antibody (R1Z75)

## Summary

---

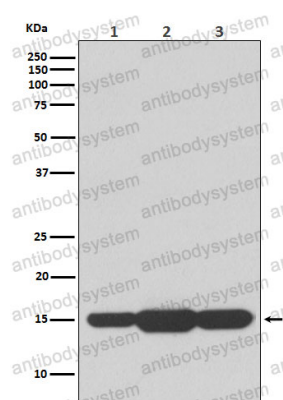
<b>Catalog No.</b>	RHF36702
<b>Clone ID</b>	R1Z75
<b>Host species</b>	Rabbit
<b>Tested applications</b>	WB: 1:1000-1:2000
<b>Species reactivity</b>	Human, Mouse, Rat
<b>Form</b>	Liquid
<b>Storage buffer</b>	0.01M PBS, pH 7.4, 0.05% BSA, 50% Glycerol, 0.05% Sodium azide.
<b>Concentration</b>	1 mg/ml
<b>Purity</b>	>95% by SDS-PAGE.
<b>Clonality</b>	Monoclonal
<b>Isotype</b>	IgG
<b>Applications</b>	WB
<b>Target</b>	MAP1 light chain 3-related protein, GABA(A) receptor-associated protein-like 2, General protein transport factor p16, Ganglioside expression factor 2, GATE-16, GEF-2, GABARAPL2, Golgi-associated ATPase enhancer of 16 kDa, Gamma-aminobutyric acid receptor-associated protein-like 2, FLC3A, GEF2
<b>Purification</b>	Protein A/G purified from cell culture supernatant.
<b>Endotoxin level</b>	Please contact with the lab for this information.
<b>Accession</b>	P60520

**Stability and Storage**

Use a manual defrost freezer and avoid repeated freeze thaw cycles. Store at 4 °C for frequent use. Store at -20 °C for twelve months from the date of receipt.

**Note**

For research use only.

**Data Image**

Western blot

Western blot analysis of GABARAPL2 expression in (1) HeLa cell lysate; (2) Mouse spleen lysate; (3) Rat brain lysate.