

Anti-PPP4C Antibody (R1Z74)

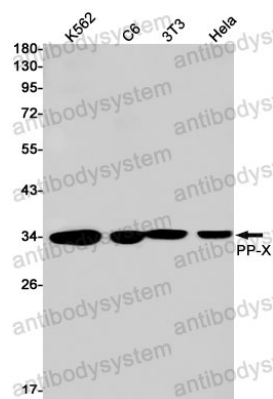
Summary

| | |
|------------------------------|---|
| Catalog No. | RHF36601 |
| Clone ID | R1Z74 |
| Host species | Rabbit |
| Tested applications | WB: 1:500-1:1000 |
| Species reactivity | Human, Mouse, Rat |
| Form | Liquid |
| Storage buffer | 0.01M PBS, pH 7.4, 0.05% BSA, 50% Glycerol, 0.05% Sodium azide. |
| Concentration | 1 mg/ml |
| Purity | >95% by SDS-PAGE. |
| Clonality | Monoclonal |
| Isotype | IgG |
| Applications | WB |
| Target | PPX, Pp4, Serine/threonine-protein phosphatase 4 catalytic subunit, PPP4C, PPP4, PP4C, Protein phosphatase X, PP-X |
| Purification | Protein A/G purified from cell culture supernatant. |
| Endotoxin level | Please contact with the lab for this information. |
| Accession | P60510 |
| Stability and Storage | Use a manual defrost freezer and avoid repeated freeze thaw cycles. Store at 4 °C for frequent use. Store at -20 °C for twelve months from the date of receipt. |

Note

For research use only.

Data Image



Western blot

Western blot analysis of PPX in K562, C6, 3T3, HeLa lysates using PPP4C antibody.