

Anti-BCAR1 Antibody (R1Z55)

Summary

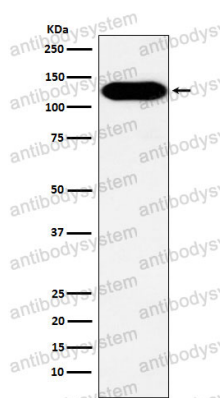
Catalog No.	RHF20202
Clone ID	R1Z55
Host species	Rabbit
Tested applications	WB: 1:1000-1:2000
Species reactivity	Human, Mouse, Rat
Form	Liquid
Storage buffer	0.01M PBS, pH 7.4, 0.05% BSA, 50% Glycerol, 0.05% Sodium azide.
Concentration	1 mg/ml
Purity	>95% by SDS-PAGE.
Clonality	Monoclonal
Isotype	IgG
Applications	WB
Target	Breast cancer anti-estrogen resistance protein 1, CRK-associated substrate, CASS1, Cas scaffolding protein family member 1, CRKAS, BCAR1, CAS, p130cas
Purification	Protein A/G purified from cell culture supernatant.
Endotoxin level	Please contact with the lab for this information.
Accession	P56945

Stability and Storage

Use a manual defrost freezer and avoid repeated freeze thaw cycles. Store at 4 °C for frequent use. Store at -20 °C for twelve months from the date of receipt.

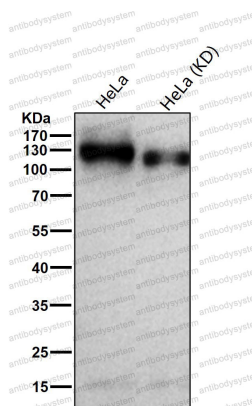
Note

For research use only.

Data Image

Western blot

Western blot analysis of BCAR1 expression in A431 cell lysate.



Western blot

All lanes use the Antibody at 1:1K dilution for 1 hour at room temperature.