

# Anti-EIF3B Antibody (R1Z43)

## Summary

---

<b>Catalog No.</b>	RHF14401
<b>Clone ID</b>	R1Z43
<b>Host species</b>	Rabbit
<b>Tested applications</b>	IF: 1:50-1:200, IP: 1:20, WB: 1:500-1:1000
<b>Species reactivity</b>	Human, Mouse, Monkey
<b>Form</b>	Liquid
<b>Storage buffer</b>	0.01M PBS, pH 7.4, 0.05% BSA, 50% Glycerol, 0.05% Sodium azide.
<b>Concentration</b>	1 mg/ml
<b>Purity</b>	>95% by SDS-PAGE.
<b>Clonality</b>	Monoclonal
<b>Isotype</b>	IgG
<b>Applications</b>	IF, IP, WB
<b>Target</b>	eIF3 p110, Eukaryotic translation initiation factor 3 subunit B, eIF-3-eta, eIF3b, EIF3B, Prt1 homolog, Eukaryotic translation initiation factor 3 subunit 9, EIF3S9, hPrt1, eIF3 p116
<b>Purification</b>	Protein A/G purified from cell culture supernatant.
<b>Endotoxin level</b>	Please contact with the lab for this information.
<b>Accession</b>	P55884

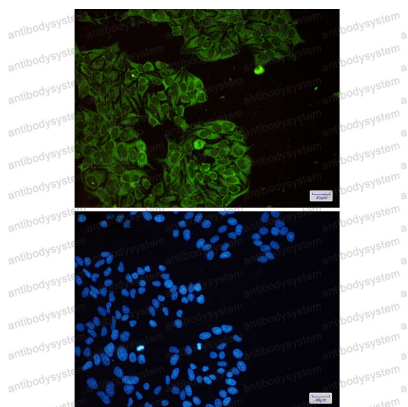
## Recombinant Proteins &amp; Antibodies

**Stability and Storage**

Use a manual defrost freezer and avoid repeated freeze thaw cycles. Store at 4 °C for frequent use. Store at -20 °C for twelve months from the date of receipt.

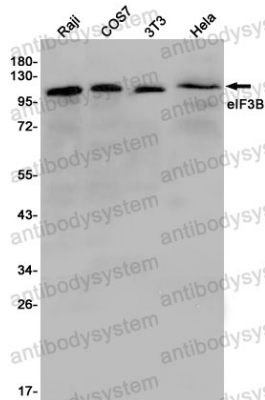
**Note**

For research use only.

**Data Image**

Immunofluorescence

Immunocytochemistry analysis of eIF3B(green) in HeLa using eIF3B antibody, and DAPI(blue)



Western blot

Western blot analysis of eIF3B in Raji, COS7, 3T3, HeLa lysates using eIF3B antibody.