

# Anti-CDH13 Antibody (R1Z35)

## Summary

---

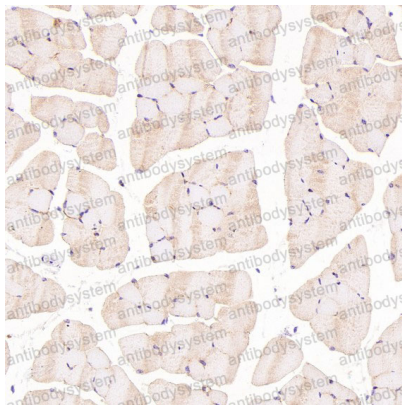
<b>Catalog No.</b>	RHF12201
<b>Clone ID</b>	R1Z35
<b>Host species</b>	Rabbit
<b>Tested applications</b>	IHC: 1:100-1:200, WB: 1:1000-1:2000
<b>Species reactivity</b>	Human, Mouse, Rat
<b>Form</b>	Liquid
<b>Storage buffer</b>	0.01M PBS, pH 7.4, 0.05% BSA, 50% Glycerol, 0.05% Sodium azide.
<b>Concentration</b>	1 mg/ml
<b>Purity</b>	>95% by SDS-PAGE.
<b>Clonality</b>	Monoclonal
<b>Isotype</b>	IgG
<b>Applications</b>	IHC, WB
<b>Target</b>	T-cad, CDH13, P105, T-cadherin, H-cadherin, CDHH, Heart cadherin, Truncated cadherin, Cadherin-13
<b>Purification</b>	Protein A/G purified from cell culture supernatant.
<b>Endotoxin level</b>	Please contact with the lab for this information.
<b>Accession</b>	P55290
<b>Stability and Storage</b>	Use a manual defrost freezer and avoid repeated freeze thaw cycles. Store at 4 °C for frequent use. Store at -20 °C for twelve months from the date of receipt.

**Note**

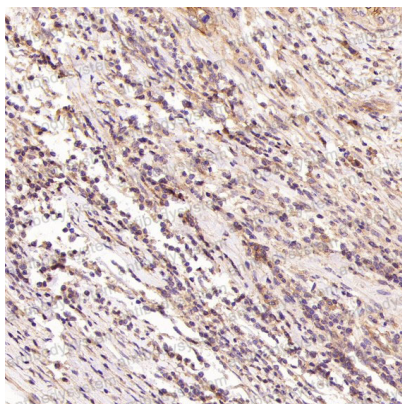
For research use only.

**Data Image**

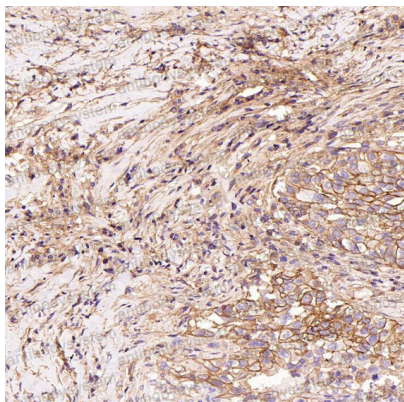
---

**Immunohistochemical**

Immunohistochemical analysis of paraffin-embedded Mouse skeletal muscle, using the Antibody at 1:100 dilution.

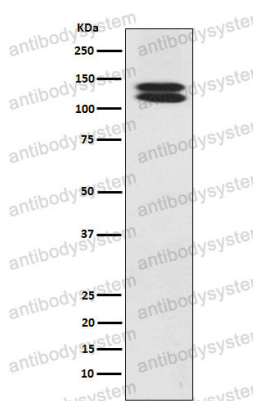
**Immunohistochemical**

Immunohistochemical analysis of paraffin-embedded Human cervical cancer, using the Antibody at 1:100 dilution.



Immunohistochemical

Immunohistochemical analysis of paraffin-embedded Human squamous cell carcinoma , using the Antibody at 1:100 dilution.



Western blot

Western blot analysis of H Cadherin expression in Human fetal heart lysate.