

# Anti-CASP9/Caspase 9 Antibody (R1Z27)

## Summary

---

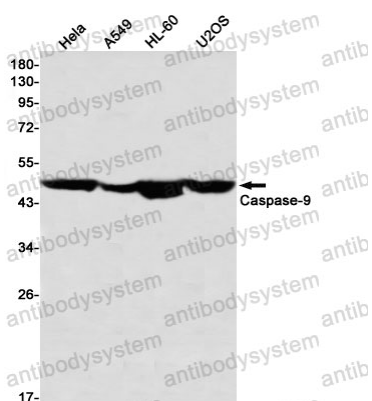
<b>Catalog No.</b>	RHF11001
<b>Clone ID</b>	R1Z27
<b>Host species</b>	Rabbit
<b>Tested applications</b>	WB: 1:500-1:1000
<b>Species reactivity</b>	Human
<b>Form</b>	Liquid
<b>Storage buffer</b>	0.01M PBS, pH 7.4, 0.05% BSA, 50% Glycerol, 0.05% Sodium azide.
<b>Concentration</b>	1.5 mg/ml
<b>Purity</b>	>95% by SDS-PAGE.
<b>Clonality</b>	Monoclonal
<b>Isotype</b>	IgG
<b>Applications</b>	WB
<b>Target</b>	CASP9, ICE-like apoptotic protease 6, Apoptotic protease Mch-6, APAF-3, CASP-9, MCH6, Apoptotic protease-activating factor 3, Caspase-9, ICE-LAP6
<b>Purification</b>	Protein A/G purified from cell culture supernatant.
<b>Endotoxin level</b>	Please contact with the lab for this information.
<b>Accession</b>	P55211

**Stability and Storage**

Use a manual defrost freezer and avoid repeated freeze thaw cycles. Store at 4 °C for frequent use. Store at -20 °C for twelve months from the date of receipt.

**Note**

For research use only.

**Data Image**

Western blot

Western blot analysis of Caspase9 in Hela, A549, HL-60, U2OS lysates using Caspase 9 antibody.