

Anti-CASP9/Caspase 9 Antibody (R1Z26)

Summary

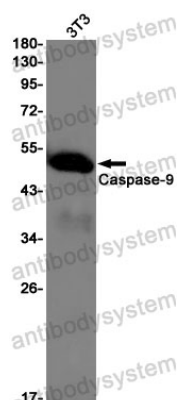
Catalog No.	RMF11001
Clone ID	R1Z26
Host species	Rabbit
Tested applications	IP: 1:20, WB: 1:500-1:1000
Species reactivity	Mouse, Rat
Form	Liquid
Storage buffer	0.01M PBS, pH 7.4, 0.05% BSA, 50% Glycerol, 0.05% Sodium azide.
Concentration	1 mg/ml
Purity	>95% by SDS-PAGE.
Clonality	Monoclonal
Isotype	IgG
Applications	IP, WB
Target	CASP9, ICE-like apoptotic protease 6, Apoptotic protease Mch-6, APAF-3, CASP-9, MCH6, Apoptotic protease-activating factor 3, Caspase-9, ICE-LAP6
Purification	Protein A/G purified from cell culture supernatant.
Endotoxin level	Please contact with the lab for this information.
Accession	Q8C3Q9

Stability and Storage

Use a manual defrost freezer and avoid repeated freeze thaw cycles. Store at 4 °C for frequent use. Store at -20 °C for twelve months from the date of receipt.

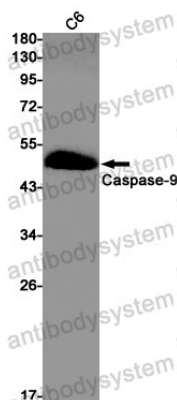
Note

For research use only.

Data Image

Western blot

Western blot analysis of Caspase9 in 3T3 lysates using Caspase 9 antibody.



Western blot

Western blot analysis of Caspase9 in C6 lysates using Caspase9 antibody.