

# Anti-CASP7 Antibody (R1Z23)

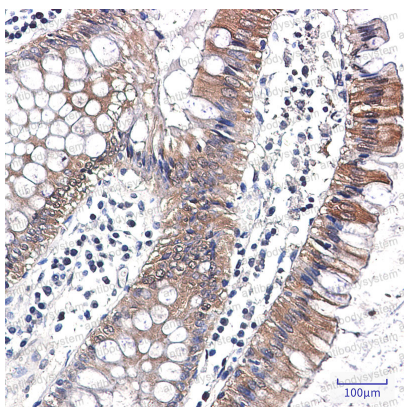
## Summary

---

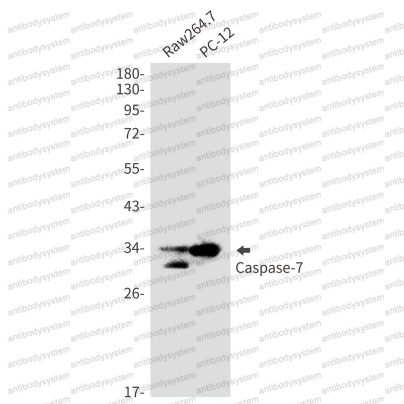
<b>Catalog No.</b>	RHF10902
<b>Clone ID</b>	R1Z23
<b>Host species</b>	Rabbit
<b>Tested applications</b>	IHC: 1:50-1:100, WB: 1:500-1:1000
<b>Species reactivity</b>	Human, Mouse, Rat
<b>Form</b>	Liquid
<b>Storage buffer</b>	0.01M PBS, pH 7.4, 0.05% BSA, 50% Glycerol, 0.05% Sodium azide.
<b>Concentration</b>	1 mg/ml
<b>Purity</b>	>95% by SDS-PAGE.
<b>Clonality</b>	Monoclonal
<b>Isotype</b>	IgG
<b>Applications</b>	IHC, WB
<b>Target</b>	CASP7, ICE-LAP3, CASP-7, MCH3, Caspase-7, CMH-1, ICE-like apoptotic protease 3, Apoptotic protease Mch-3
<b>Purification</b>	Protein A/G purified from cell culture supernatant.
<b>Endotoxin level</b>	Please contact with the lab for this information.
<b>Accession</b>	P55210
<b>Stability and Storage</b>	Use a manual defrost freezer and avoid repeated freeze thaw cycles. Store at 4 °C for frequent use. Store at -20 °C for twelve months from the date of receipt.

**Note**

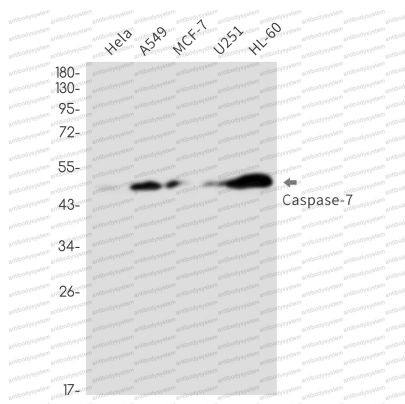
For research use only.

**Data Image****Immunohistochemical**

Immunohistochemistry analysis of paraffin-embedded Human colon cancer using Caspase7 antibody. High-pressure and temperature Sodium Citrate pH 6.0 was used for antigen retrieval.

**Western blot**

Western blot analysis of Caspase7 in Raw264.7, PC-12 lysates using Caspase 7 antibody.



Western blot

Western blot analysis of Caspase7 in HeLa, A549, MCF-7, U251, HL-60 lysates using Caspase7 antibody.