

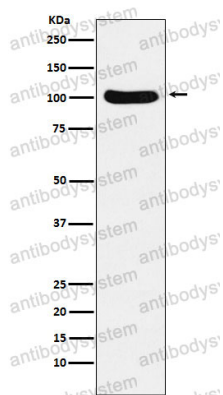
Anti-CSE1L Antibody (R1Z11)

Summary

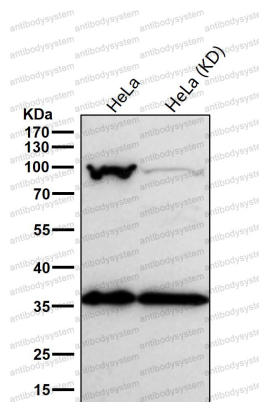
Catalog No.	RHF08502
Clone ID	R1Z11
Host species	Rabbit
Tested applications	FCM: 1:20-1:100, IF: 1:50-1:200, IHC: 1:100-1:200, WB: 1:1000-1:2000
Species reactivity	Human, Mouse
Form	Liquid
Storage buffer	0.01M PBS, pH 7.4, 0.05% BSA, 50% Glycerol, 0.05% Sodium azide.
Concentration	1 mg/ml
Purity	>95% by SDS-PAGE.
Clonality	Monoclonal
Isotype	IgG
Applications	FCM, IF, IHC, WB
Target	Cellular apoptosis susceptibility protein, XPO2, CSE1L, CAS, Chromosome segregation 1-like protein, Importin-alpha re-exporter, Exp2, Exportin-2
Purification	Protein A/G purified from cell culture supernatant.
Endotoxin level	Please contact with the lab for this information.
Accession	P55060
Stability and Storage	Use a manual defrost freezer and avoid repeated freeze thaw cycles. Store at 4 °C for frequent use. Store at -20 °C for twelve months from the date of receipt.

Note

For research use only.

Data Image**Western blot**

Western blot analysis of Cellular Apoptosis
Susceptibility expression in Ramos cell lysate.

**Western blot**

All lanes use the Antibody at 1:1K dilution for 1
hour at room temperature.