

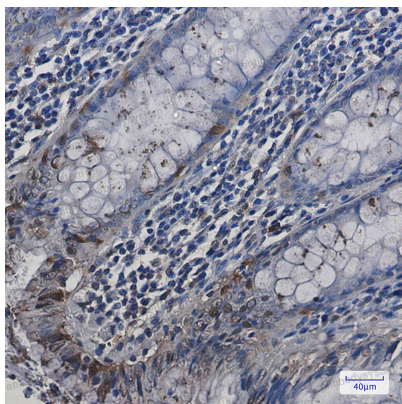
# Anti-HSPA2 Antibody (R1Y96)

## Summary

---

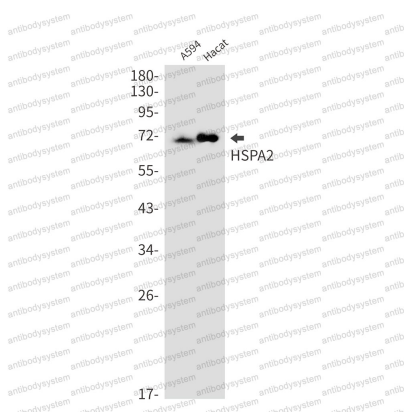
<b>Catalog No.</b>	RHF04101
<b>Clone ID</b>	R1Y96
<b>Host species</b>	Rabbit
<b>Tested applications</b>	IHC: 1:50-1:100, WB: 1:500-1:1000
<b>Species reactivity</b>	Human, Mouse, Rat
<b>Form</b>	Liquid
<b>Storage buffer</b>	0.01M PBS, pH 7.4, 0.05% BSA, 50% Glycerol, 0.05% Sodium azide.
<b>Concentration</b>	1 mg/ml
<b>Purity</b>	>95% by SDS-PAGE.
<b>Clonality</b>	Monoclonal
<b>Isotype</b>	IgG
<b>Applications</b>	IHC, WB
<b>Target</b>	HSPA2, Heat shock-related 70 kDa protein 2, Heat shock 70 kDa protein 2
<b>Purification</b>	Protein A/G purified from cell culture supernatant.
<b>Endotoxin level</b>	Please contact with the lab for this information.
<b>Accession</b>	P54652
<b>Stability and Storage</b>	Use a manual defrost freezer and avoid repeated freeze thaw cycles. Store at 4 °C for frequent use. Store at -20 °C for twelve months from the date of receipt.
<b>Note</b>	For research use only.

## Data Image



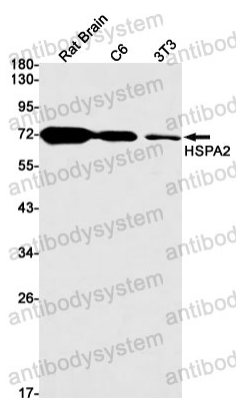
Immunohistochemical

Immunohistochemistry analysis of paraffin-embedded Human colon cancer using HSPA2 antibody. High-pressure and temperature Sodium Citrate pH 6.0 was used for antigen retrieval.



Western blot

Western blot analysis of HSPA2 in A549, Hecate lysates using HspA2 antibody.



Western blot

Western blot analysis of HSPA2 in rat Brain, C6, 3T3 lysates using HSPA2 antibody.