

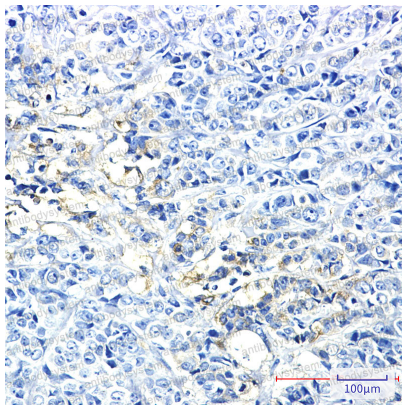
Anti-HK2 Antibody (R1Y68)

Summary

Catalog No.	RHE94901
Clone ID	R1Y68
Host species	Rabbit
Tested applications	IHC: 1:50-1:100, IP: 1:20, WB: 1:500-1:1000
Species reactivity	Human, Rat, Hamster
Form	Liquid
Storage buffer	0.01M PBS, pH 7.4, 0.05% BSA, 50% Glycerol, 0.05% Sodium azide.
Concentration	1 mg/ml
Purity	>95% by SDS-PAGE.
Clonality	Monoclonal
Isotype	IgG
Applications	IHC, IP, WB
Target	HK II, Hexokinase type II, Hexokinase-2, Hexokinase-B, HK2, Muscle form hexokinase
Purification	Protein A/G purified from cell culture supernatant.
Endotoxin level	Please contact with the lab for this information.
Accession	P52789
Stability and Storage	Use a manual defrost freezer and avoid repeated freeze thaw cycles. Store at 4 °C for frequent use. Store at -20 °C for twelve months from the date of receipt.

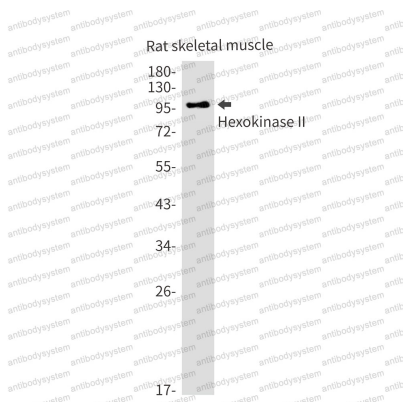
Note For research use only.

Data Image



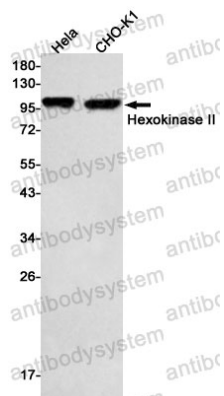
Immunohistochemical

Immunohistochemistry analysis of paraffin-embedded Human breast cancer using Hexokinase II antibody. High-pressure and temperature Sodium Citrate pH 6.0 was used for antigen retrieval.



Western blot

Western blot analysis of Hexokinase II in rat skeletal muscle lysates using Hexokinase II antibody.



Western blot

Western blot analysis of Hexokinase II in HeLa, CHO-K1 lysates using Hexokinase II antibody.