

# Anti-ARHGDIA Antibody (R1Y57)

## Summary

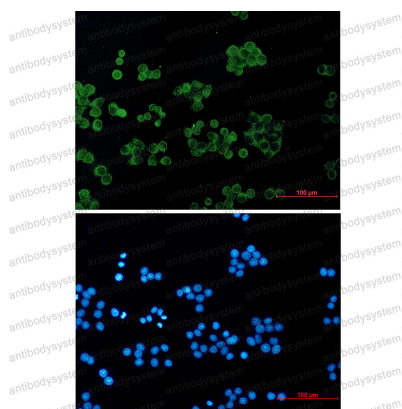
---

<b>Catalog No.</b>	RHE92301
<b>Clone ID</b>	R1Y57
<b>Host species</b>	Rabbit
<b>Tested applications</b>	IF: 1:50-1:200, WB: 1:500-1:1000
<b>Species reactivity</b>	Human, Mouse, Rat
<b>Form</b>	Liquid
<b>Storage buffer</b>	0.01M PBS, pH 7.4, 0.05% BSA, 50% Glycerol, 0.05% Sodium azide.
<b>Concentration</b>	1 mg/ml
<b>Purity</b>	>95% by SDS-PAGE.
<b>Clonality</b>	Monoclonal
<b>Isotype</b>	IgG
<b>Applications</b>	IF, WB
<b>Target</b>	Rho GDP-dissociation inhibitor 1, GDIA1, Rho GDI 1, Rho-GDI alpha, ARHGDIA
<b>Purification</b>	Protein A/G purified from cell culture supernatant.
<b>Endotoxin level</b>	Please contact with the lab for this information.
<b>Accession</b>	P52565
<b>Stability and Storage</b>	Use a manual defrost freezer and avoid repeated freeze thaw cycles. Store at 4 °C for frequent use. Store at -20 °C for twelve months from the date of receipt.

**Note**

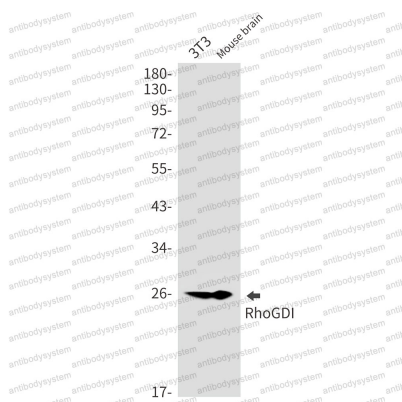
For research use only.

## Data Image



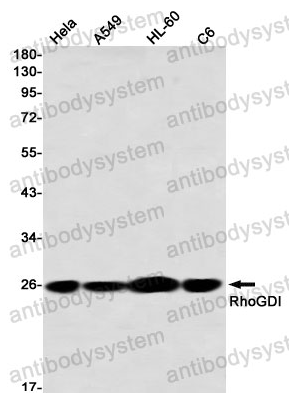
Immunofluorescence

Immunocytochemistry analysis of RhoGDI (green) in Hela using RhoGDI antibody, and DAPI (blue).



Western blot

Western blot analysis of RhoGDI in 3T3, mouse brain lysates using RhoGDI antibody.



Western blot

Western blot analysis of RhoGDI in HeLa, A549, HL-60, C6 lysates using RhoGDI antibody