

Anti-ARHGDIA Antibody (R1Y56)

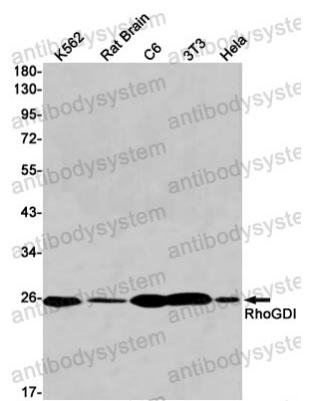
Summary

Catalog No.	RHE92302
Clone ID	R1Y56
Host species	Rabbit
Tested applications	WB: 1:500-1:1000
Species reactivity	Human, Mouse, Rat
Form	Liquid
Storage buffer	0.01M PBS, pH 7.4, 0.05% BSA, 50% Glycerol, 0.05% Sodium azide.
Concentration	1 mg/ml
Purity	>95% by SDS-PAGE.
Clonality	Monoclonal
Isotype	IgG
Applications	WB
Target	Rho GDP-dissociation inhibitor 1, GDIA1, Rho GDI 1, Rho-GDI alpha, ARHGDIA
Purification	Protein A/G purified from cell culture supernatant.
Endotoxin level	Please contact with the lab for this information.
Accession	P52565
Stability and Storage	Use a manual defrost freezer and avoid repeated freeze thaw cycles. Store at 4 °C for frequent use. Store at -20 °C for twelve months from the date of receipt.

Note

For research use only.

Data Image



Western blot

Western blot analysis of RhoGDI in K562, rat Brain, C6, 3T3, HeLa lysates using RhoGDI antibody.