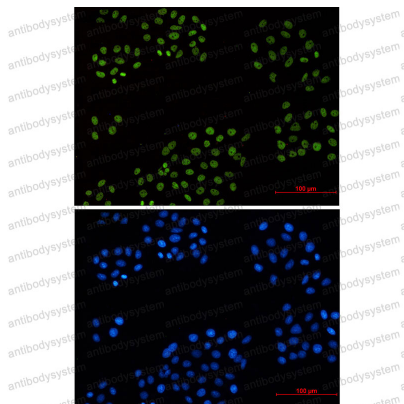


Anti-CCNH Antibody (R1Y48)

Summary

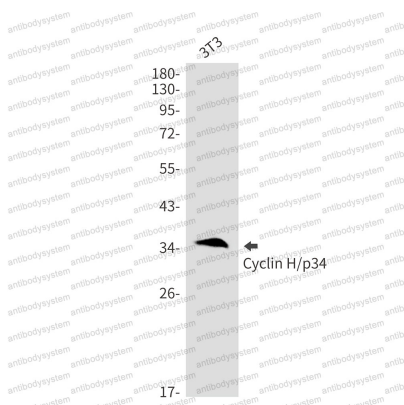
Catalog No.	RHE90001
Clone ID	R1Y48
Host species	Rabbit
Tested applications	IF: 1:50-1:200, IP: 1:20, WB: 1:500-1:1000
Species reactivity	Human, Mouse
Form	Liquid
Storage buffer	0.01M PBS, pH 7.4, 0.05% BSA, 50% Glycerol, 0.05% Sodium azide.
Concentration	1 mg/ml
Purity	>95% by SDS-PAGE.
Clonality	Monoclonal
Isotype	IgG
Applications	IF, IP, WB
Target	MO15-associated protein, Cyclin-H, p37, p34, CCNH
Purification	Protein A/G purified from cell culture supernatant.
Endotoxin level	Please contact with the lab for this information.
Accession	P51946
Stability and Storage	Use a manual defrost freezer and avoid repeated freeze thaw cycles. Store at 4 °C for frequent use. Store at -20 °C for twelve months from the date of receipt.
Note	For research use only.

Data Image



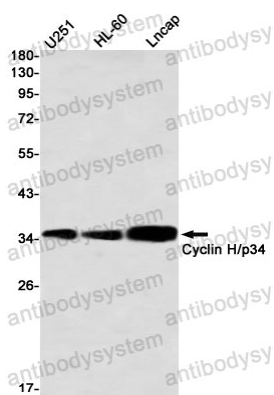
Immunofluorescence

Immunocytochemistry analysis of Cyclin H (green) in HeLa using Cyclin H antibody, and DAPI (blue).



Western blot

Western blot analysis of Cyclin H/p34 in 3T3 lysates using Cyclin H/p34 antibody.



Western blot

Western blot analysis of Cyclin H/p34 in U251, HL-60, Lncap lysates using Cyclin H/p34 antibody