

Anti-RPS6KA3 Antibody (R1Y40)

Summary

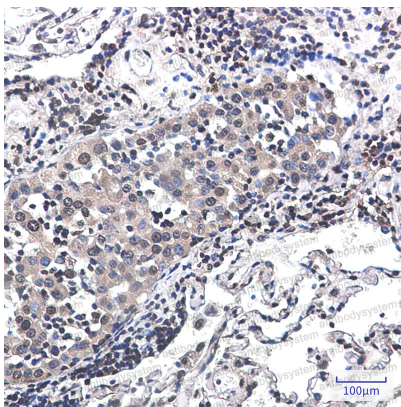
Catalog No.	RHE88001
Clone ID	R1Y40
Host species	Rabbit
Tested applications	IHC: 1:50-1:100, IP: 1:20, WB: 1:500-1:1000
Species reactivity	Human, Hamster
Form	Liquid
Storage buffer	0.01M PBS, pH 7.4, 0.05% BSA, 50% Glycerol, 0.05% Sodium azide.
Concentration	1 mg/ml
Purity	>95% by SDS-PAGE.
Clonality	Monoclonal
Isotype	IgG
Applications	IHC, IP, WB
Target	Insulin-stimulated protein kinase 1, MAP kinase-activated protein kinase 1b, ISPK-1, RSK2, Ribosomal S6 kinase 2, MAPKAPK-1b, ISPK1, pp90RSK2, p90RSK3, RSK-2, 90 kDa ribosomal protein S6 kinase 3, MAPKAPK1B, S6K-alpha-3, MAPKAP kinase 1b, p90-RSK 3, RPS6KA3, MAPK-activated protein kinase 1b, Ribosomal protein S6 kinase alpha-3
Purification	Protein A/G purified from cell culture supernatant.
Endotoxin level	Please contact with the lab for this information.
Accession	P51812

Stability and Storage

Use a manual defrost freezer and avoid repeated freeze thaw cycles. Store at 4 °C for frequent use. Store at -20 °C for twelve months from the date of receipt.

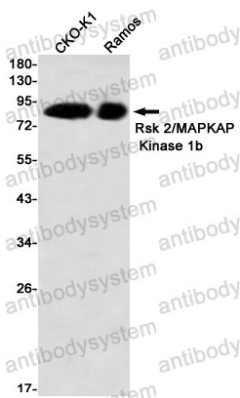
Note

For research use only.

Data Image

Immunohistochemical

Immunohistochemistry analysis of paraffin-embedded Human lung cancer using Rsk 2/MAPKAP Kinase 1b antibody. High-pressure and temperature Sodium Citrate pH 6.0 was used for antigen retrieval.



Western blot

Western blot analysis of Rsk 2/MAPKAP Kinase 1b in CHO-K1, Ramos lysates using RSK2 antibody.