

# Anti-Phospho-RPS6KA3/RSK2 (Ser227) Antibody (R1Y39)

## Summary

---

<b>Catalog No.</b>	RHE88002
<b>Clone ID</b>	R1Y39
<b>Host species</b>	Rabbit
<b>Tested applications</b>	IP: 1:20, WB: 1:500-1:1000
<b>Species reactivity</b>	Human, Mouse, Rat
<b>Form</b>	Liquid
<b>Storage buffer</b>	0.01M PBS, pH 7.4, 0.05% BSA, 50% Glycerol, 0.05% Sodium azide.
<b>Concentration</b>	1 mg/ml
<b>Purity</b>	>95% by SDS-PAGE.
<b>Clonality</b>	Monoclonal
<b>Isotype</b>	IgG
<b>Applications</b>	IP, WB
<b>Target</b>	Insulin-stimulated protein kinase 1, MAP kinase-activated protein kinase 1b, ISPK-1, RSK2, Ribosomal S6 kinase 2, MAPKAPK-1b, ISPK1, pp90RSK2, p90RSK3, RSK-2, 90 kDa ribosomal protein S6 kinase 3, MAPKAPK1B, S6K-alpha-3, MAPKAP kinase 1b, p90-RSK 3, RPS6KA3, MAPK-activated protein kinase 1b, Ribosomal protein S6 kinase alpha-3
<b>Purification</b>	Protein A/G purified from cell culture supernatant.
<b>Endotoxin level</b>	Please contact with the lab for this information.

## Recombinant Proteins &amp; Antibodies

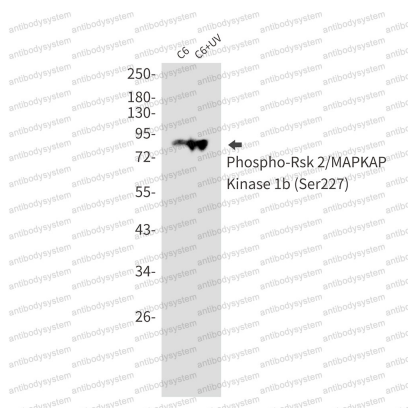
**Accession** P51812**Stability and Storage**

Use a manual defrost freezer and avoid repeated freeze thaw cycles. Store at 4 °C for frequent use. Store at -20 °C for twelve months from the date of receipt.

**Note**

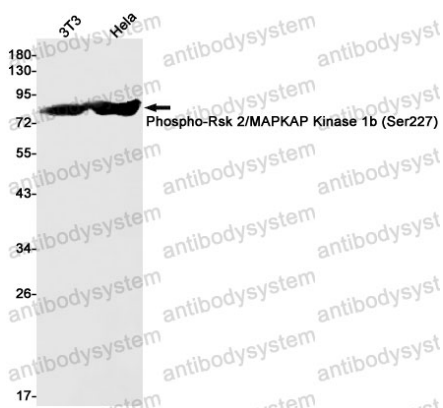
For research use only.

## Data Image



Western blot

Western blot analysis of Phospho-Rsk 2/MAPKAP Kinase 1b (Ser227) in C6, C6+UV lysates using Phospho-RSK2 (Ser227) antibody.



Western blot

Western blot analysis of Phospho-Rsk 2/MAPKAP Kinase 1b (Ser227) in 3T3, Hela lysates using Phospho-Rsk 2/MAPKAP Kinase 1b (Ser227) antibody.