

# Anti-UBE2D1 Antibody (R1Y34)

## Summary

---

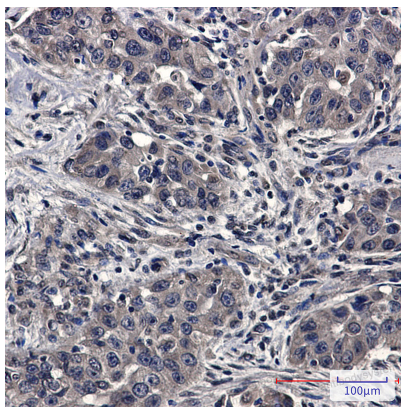
<b>Catalog No.</b>	RHE84901
<b>Clone ID</b>	R1Y34
<b>Host species</b>	Rabbit
<b>Tested applications</b>	IHC: 1:50-1:100, IP: 1:20, WB: 1:500-1:1000
<b>Species reactivity</b>	Human, Mouse
<b>Form</b>	Liquid
<b>Storage buffer</b>	0.01M PBS, pH 7.4, 0.05% BSA, 50% Glycerol, 0.05% Sodium azide.
<b>Concentration</b>	1 mg/ml
<b>Purity</b>	>95% by SDS-PAGE.
<b>Clonality</b>	Monoclonal
<b>Isotype</b>	IgG
<b>Applications</b>	IHC, IP, WB
<b>Target</b>	Stimulator of Fe transport, (E3-independent) E2 ubiquitin-conjugating enzyme D1, Ubiquitin-conjugating enzyme E2(17)KB 1, Ubiquitin carrier protein D1, Ubiquitin-conjugating enzyme E2 D1, Ubiquitin-protein ligase D1, UBCH5, UBC5A, UBCH5A, SFT, Ubch5, UBC4/5 homolog, Ubiquitin-conjugating enzyme E2-17 kDa 1, E2 ubiquitin-conjugating enzyme D1, UBE2D1
<b>Purification</b>	Protein A/G purified from cell culture supernatant.
<b>Endotoxin level</b>	Please contact with the lab for this information.
<b>Accession</b>	P51668

**Stability and Storage**

Use a manual defrost freezer and avoid repeated freeze thaw cycles. Store at 4 °C for frequent use. Store at -20 °C for twelve months from the date of receipt.

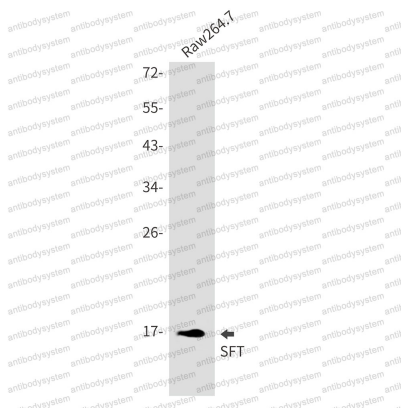
**Note**

For research use only.

**Data Image**

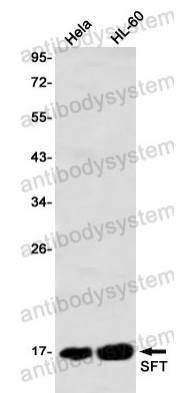
Immunohistochemical

Immunohistochemistry analysis of paraffin-embedded Human lung cancer using SFT antibody. High-pressure and temperature Sodium Citrate pH 6.0 was used for antigen retrieval.



Western blot

Western blot analysis of SFT in Raw264.7 lysates using SFT antibody.



Western blot

Western blot analysis of SFT in HeLa, HL-60 lysates using SFT antibody.