

Anti-UBE2D1 Antibody (R1Y33)

Summary

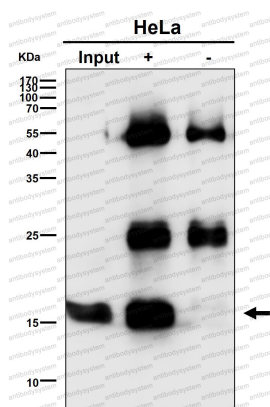
Catalog No.	RHE84902
Clone ID	R1Y33
Host species	Rabbit
Tested applications	IHC: 1:100-1:200, IP: 1:20-1:50, WB: 1:1000-1:2000
Species reactivity	Human, Mouse, Rat
Form	Liquid
Storage buffer	0.01M PBS, pH 7.4, 0.05% BSA, 50% Glycerol, 0.05% Sodium azide.
Concentration	1 mg/ml
Purity	>95% by SDS-PAGE.
Clonality	Monoclonal
Isotype	IgG
Applications	IHC, IP, WB
Target	Stimulator of Fe transport, (E3-independent) E2 ubiquitin-conjugating enzyme D1, Ubiquitin-conjugating enzyme E2(17)KB 1, Ubiquitin carrier protein D1, Ubiquitin-conjugating enzyme E2 D1, Ubiquitin-protein ligase D1, UBCH5, UBC5A, UBCH5A, SFT, Ubch5, UBC4/5 homolog, Ubiquitin-conjugating enzyme E2-17 kDa 1, E2 ubiquitin-conjugating enzyme D1, UBE2D1
Purification	Protein A/G purified from cell culture supernatant.
Endotoxin level	Please contact with the lab for this information.
Accession	P51668

Stability and Storage

Use a manual defrost freezer and avoid repeated freeze thaw cycles. Store at 4 °C for frequent use. Store at -20 °C for twelve months from the date of receipt.

Note

For research use only.

Data Image

Immunoprecipitation

Immunoprecipitate (IP) analysis using the Antibody at 1:50 dilution. (wb at 1:500 dilution)



Western blot

Western blot analysis of SFT expression in Raji cell lysate.