

Anti-BRG1/SMARCA4 Antibody (R1Y26)

Summary

Catalog No.	RME82901
Clone ID	R1Y26
Host species	Rabbit
Tested applications	IF: 1:50-1:200, IHC: 1:50-1:100, IP: 1:20, WB: 1:500-1:1000
Species reactivity	Human, Mouse, Rat
Form	Liquid
Storage buffer	0.01M PBS, pH 7.4, 0.05% BSA, 50% Glycerol, 0.05% Sodium azide.
Concentration	1 mg/ml
Purity	>95% by SDS-PAGE.
Clonality	Monoclonal
Isotype	IgG
Applications	IF, IHC, IP, WB
Target	Protein brahma homolog 1, SWI/SNF-related matrix-associated actin-dependent regulator of chromatin subfamily A member 4, Protein BRG-1, Transcription activator BRG1, BRG1-associated factor 190A, SNF2-beta, SNF2L4, SMARCA4, ATP-dependent helicase SMARCA4, SNF2B, BRG1, BAF190A, Mitotic growth and transcription activator
Purification	Protein A/G purified from cell culture supernatant.
Endotoxin level	Please contact with the lab for this information.
Accession	Q3TKT4

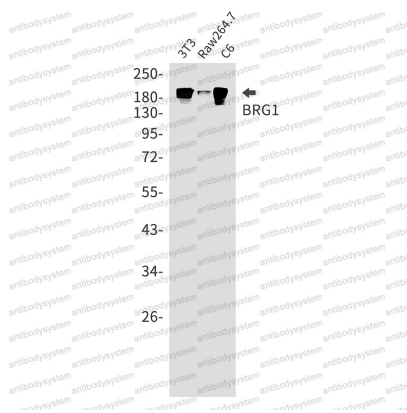
Stability and Storage

Use a manual defrost freezer and avoid repeated freeze thaw cycles. Store at 4 °C for frequent use. Store at -20 °C for twelve months from the date of receipt.

Note

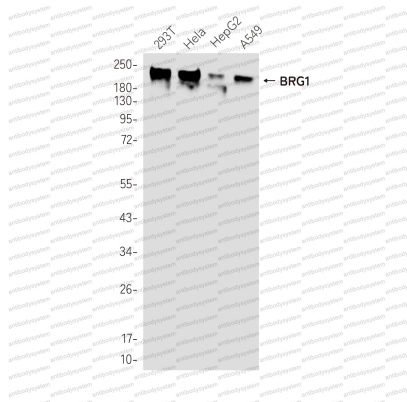
For research use only.

Data Image



Western blot

Western blot analysis of BRG1 in 3T3, Raw264.7, C6 lysates using BRG1 antibody.



Western blot

Western blot analysis of BRG1 in 293T, Hela, HepG2, A549 lysates using BRG1 antibody.