

Anti-SMARCA2 Antibody (R1Y24)

Summary

Catalog No.	RHE82802
Clone ID	R1Y24
Host species	Rabbit
Tested applications	IF: 1:50-1:200, IHC: 1:50-1:100, WB: 1:500-1:1000
Species reactivity	Human
Form	Liquid
Storage buffer	0.01M PBS, pH 7.4, 0.05% BSA, 50% Glycerol, 0.05% Sodium azide.
Concentration	1 mg/ml
Purity	>95% by SDS-PAGE.
Clonality	Monoclonal
Isotype	IgG
Applications	IF, IHC, WB
Target	hBRM, SNF2A, Protein brahma homolog, SMARCA2, ATP-dependent helicase SMARCA2, SNF2-alpha, BRM, BAF190B, BRG1-associated factor 190B, Probable global transcription activator SNF2L2, SNF2L2, SWI/SNF-related matrix-associated actin-dependent regulator of chromatin subfamily A member 2
Purification	Protein A/G purified from cell culture supernatant.
Endotoxin level	Please contact with the lab for this information.
Accession	P51531

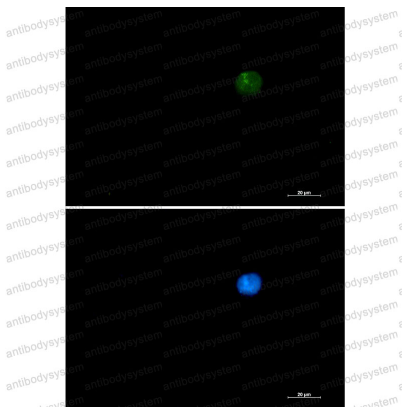
Stability and Storage

Use a manual defrost freezer and avoid repeated freeze thaw cycles. Store at 4 °C for frequent use. Store at -20 °C for twelve months from the date of receipt.

Note

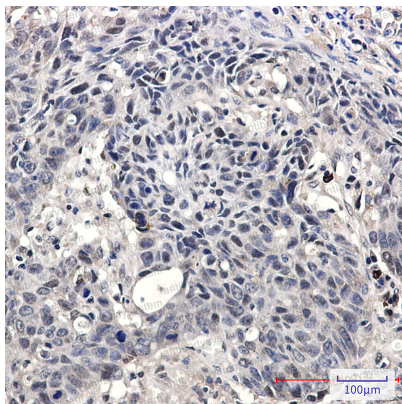
For research use only.

Data Image



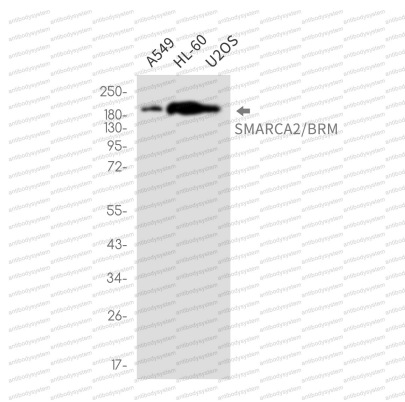
Immunofluorescence

Immunocytochemistry analysis of SMARCA2 (green) in 293 using SMARCA2 antibody, and DAPI (blue).



Immunohistochemical

Immunohistochemistry analysis of paraffin-embedded Human lung cancer tissue using SMARCA2/BRM antibody. High-pressure and temperature Sodium Citrate pH 6.0 was used for antigen retrieval.



Western blot

Western blot analysis of SMARCA2/BRM in A549, HL-60, U2OS lysates using SMARCA2/BRM antibody.