

Anti-NOVA1 Antibody (R1Y23)

Summary

Catalog No.	RHE82401
Clone ID	R1Y23
Host species	Rabbit
Tested applications	IHC: 1:50-1:100, WB: 1:500-1:1000
Species reactivity	Human, Mouse, Rat
Form	Liquid
Storage buffer	0.01M PBS, pH 7.4, 0.05% BSA, 50% Glycerol, 0.05% Sodium azide.
Concentration	1 mg/ml
Purity	>95% by SDS-PAGE.
Clonality	Monoclonal
Isotype	IgG
Applications	IHC, WB
Target	Ventral neuron-specific protein 1, Onconeural ventral antigen 1, Neuro-oncological ventral antigen 1, RNA-binding protein Nova-1, Paraneoplastic Ri antigen, NOVA1
Purification	Protein A/G purified from cell culture supernatant.
Endotoxin level	Please contact with the lab for this information.
Accession	P51513

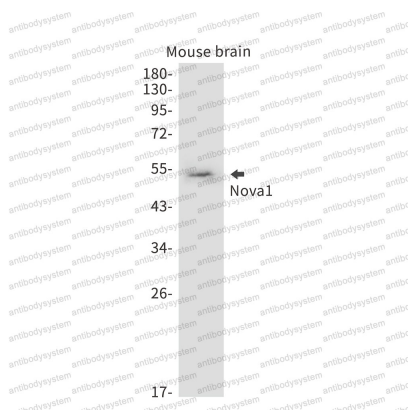
Recombinant Proteins & Antibodies

Stability and Storage

Use a manual defrost freezer and avoid repeated freeze thaw cycles. Store at 4 °C for frequent use. Store at -20 °C for twelve months from the date of receipt.

Note

For research use only.

Data Image

Western blot

Western blot analysis of Nova1 in rat lung lysates using Nova1 antibody.